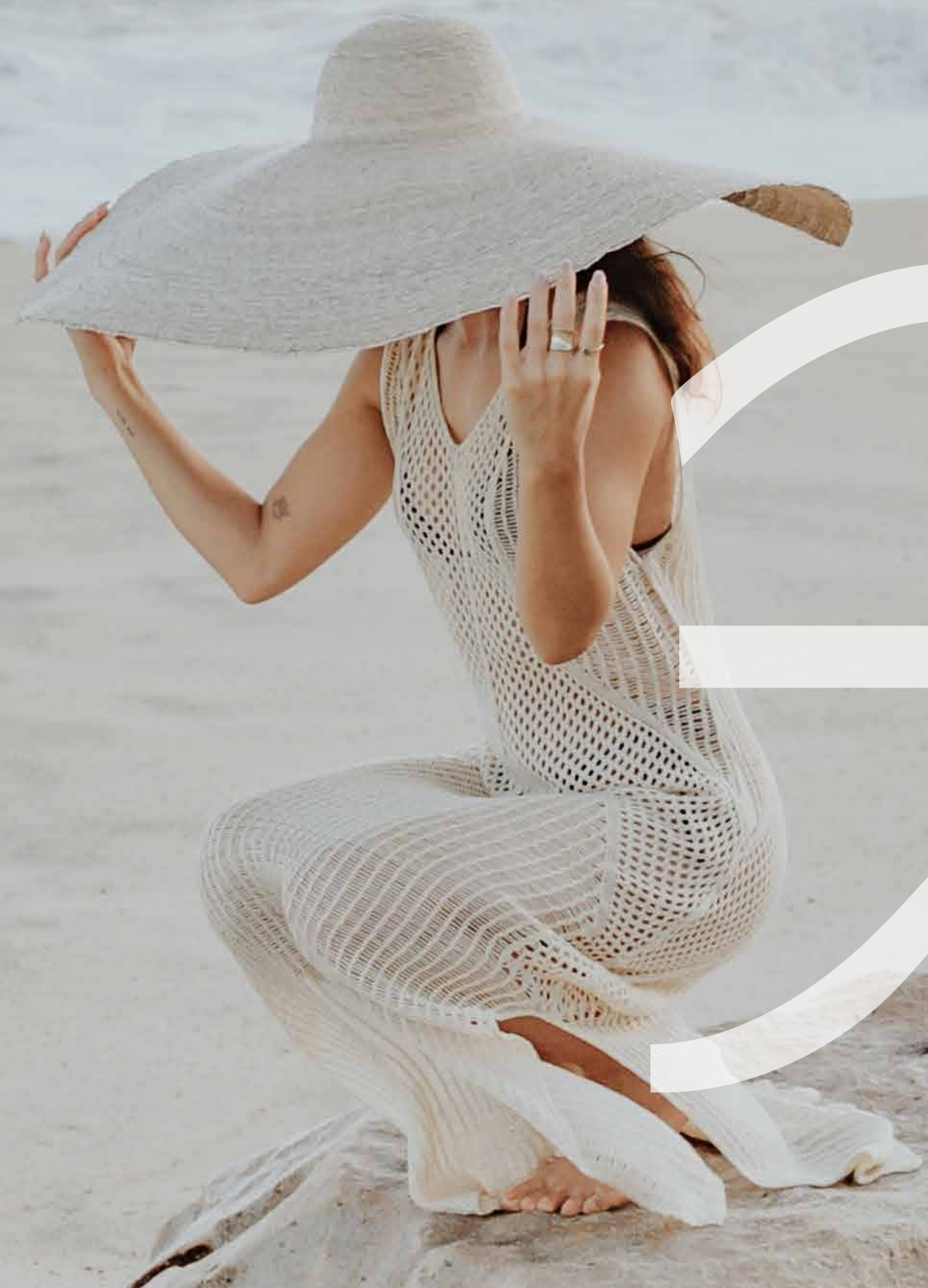




Telal
SHORES

EL SOKHNA

Telal
SHORES
EL SOKHNA



ABOUT



As a trailblazing force in the region's real estate landscape, Roya Developments stands tall, renowned for crafting transformative residential havens that embody coastal allure and urban vibrancy. Our portfolio, graced by iconic beachside sanctuaries and metropolitan retreats, includes distinguished projects like Telal North Coast, Telal Sokhna, Telal East, and Stone Park.





PROJECT OVERVIEW

Welcome to TELAL SHORES
where a harmonious living experience
awaits. Nestled in the picturesque
Telal El Sokhna project, Telal
Shores embodies the pinnacle of
coastal living. Here, every element
is thoughtfully curated to redefine
modernity and luxury.

Heres to... **HARMONY WITHIN.**



MASTER PLAN

TELAL SHORES is located on the far west side of Telal El Sokhna project, where it stands out as the main exposure point for arrivals from the New Administrative Capital & Cairo.

With a total area of 88 Feddans, the project includes an array of various experiences that cater for the needs and wants of all family members.

- THE SHOWN MASTERPLAN AND ALL ITS RELEVANT CONTENTS ARE FOR ILLUSTRATIVE PURPOSES ONLY.

- ALL DIMENSIONS, LOCATIONS AND/OR ORIENTATIONS ARE SHOWN IN A CONCEPTUAL FORMAT AND ARE SUBJECT TO VARY AS PER FURTHER DETAILED STUDIES, ENGINEERING REQUIREMENTS AND/OR REGULATIONS.

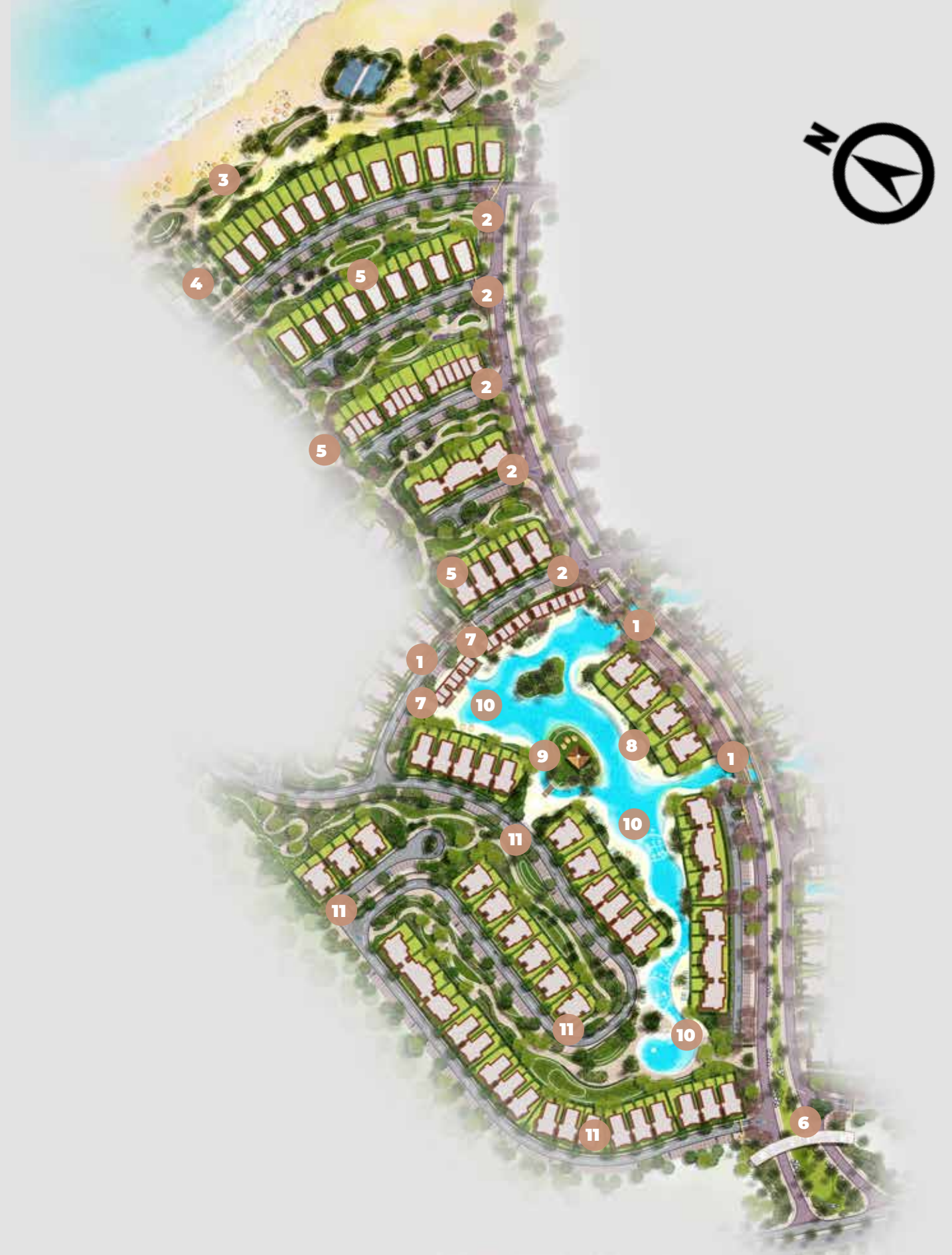


TELAL SHORES PHASE ONE

- 1 Iconic Bridge
- 2 Access Gateways
- 3 Beach Front
- 4 Beach Gateway
- 5 Green Valleys
- 6 Main Gate
- 7 Lagoon Cabins
- 8 Island residence
- 9 Lagoon clubhouse
- 10 Swimmable Lagoon
- 11 Mountain Meandering Road

- THE SHOWN MASTERPLAN AND ALL ITS RELEVANT CONTENTS ARE FOR ILLUSTRATIVE PURPOSES ONLY.

- ALL DIMENSIONS, LOCATIONS AND/OR ORIENTATIONS ARE SHOWN IN A CONCEPTUAL FORMAT AND ARE SUBJECT TO VARY AS PER FURTHER DETAILED STUDIES, ENGINEERING REQUIREMENTS AND/OR REGULATIONS.





UNMATCHED
LIVING FACILITIES



MODERN ARCHITECTURE AND DESIGN

At Telal SHORES modern architecture meets timeless design. Our structures are not just functional; they are aesthetic marvels, a testament to the art of living.



HIGH END DESIGN ARTICULATION

Embrace the minimalist ethos as we use premium construction materials that not only reflect simplicity but also ensure lasting quality.





LUXURIOUS AMENITIES

Indulge in a rich tapestry of amenities that redefine modern living at Telal Shores. From serene lagoons and a beachfront to a boutique hotel and an array of offerings, we've thoughtfully curated every element to elevate your living experience. Dive into inviting swimming pools, stay fit in cutting-edge gyms, relax in lush parks, and explore the wealth of leisure and luxury that awaits you.





EXCLUSIVE 500M BEACH FRONT

Immerse yourself in the sheer beauty of Telal **SHORES**' 500 meters of pristine beachfront. Here, the golden sands meet the azure waters of the Red Sea, providing an idyllic backdrop for relaxation and recreation. Whether you're strolling along the shore, basking in the sun, or savoring the sound of gentle waves, this expansive beachfront offers an unparalleled coastal experience.





16,800 m² SWIMMABLE LAGOONS

At Telal SHORES, we've created a paradise within a paradise with our meticulously crafted 4 feddans of swimmable lagoons. Dive into the crystal-clear waters and let your cares float away. These enchanting lagoons provide an oasis of tranquility, perfect for swimming or unwinding by the water's edge. Experience the harmony of nature as you embrace the serenity of our swimmable lagoons.





PANORAMIC WATER VIEWS

Elevate your perspective at Telal SHORES with breathtaking panoramic views that stretch as far as the eye can see. From your residence, feast your eyes on the majestic vistas of the Red Sea, the rugged beauty of the surrounding mountains, and the expanse of the lush landscape. Whether you're enjoying a morning coffee or hosting an evening gathering, these sweeping views create an ever-changing masterpiece that will leave you in awe, day after day.



DIVERSE PROPERTY TYPES

Tailor your abode to your aspirations, choosing from an array of thoughtfully designed options like chalets, villas, and more, each harmoniously aligned with your dreams.





UNVEILING YOUR SPACE

Telal SHORES introduces the modern coastal architecture tailored for all personal preferences, uniting innovation with individuality in a harmonious blend. Through this articulation, each unit becomes a unique reflection of its owner, while a seamless integration between home and nature adds depth.

Beyond its aesthetic spirit, Telal SHORES creates a holistic living experience, where modern design converges with individual essence.





STANDALONE VILLA

Ground Floor

BUA 138M²

CONFIGURATION

- 5 Master Bedrooms
- Upper Living room
- Maid room & bathroom
- Driver room & bathroom



Reception	7.25 x 4.55 M ²
Dining	3.65 x 3.50 M ²
Kitchen	3.60 x 3.50 M ²
Toilet	1.70 x 2.35 M ²
Maid's room	3.05 x 1.40 M ²
Maid's bathroom	1.50 x 1.40 M ²
Driver's room	1.65 x 2.95 M ²
Driver's bathroom	1.50 x 1.40 M ²
Bedroom	3.60 x 4.00 M ²
Bathroom	1.70 x 2.70 M ²
Terrace	2.00 x 8.30 M ²

· THE CEILING MATERIALS OF SOME TYPICAL TERRACES ARE WOODEN LIKE MATERIAL OR AS SHOWN IN THE RENDERS.
 · CLADDING TYPE AND COLOR WILL BE SUBJECT TO AVAILABILITY AT THE TIME OF CONSTRUCTION.
 · PLANTING SHOWN IS FOR ILLUSTRATIVE PURPOSES ONLY.
 · DRAWINGS AND DIMENSIONS ARE FOR ILLUSTRATIVE PURPOSES AND ARE SUBJECT TO MODIFICATIONS AT THE DISCRETION OF THE DEVELOPER.

STANDALONE VILLA

First Floor

BUA 162M²

TOTAL UNIT BUA 300M²



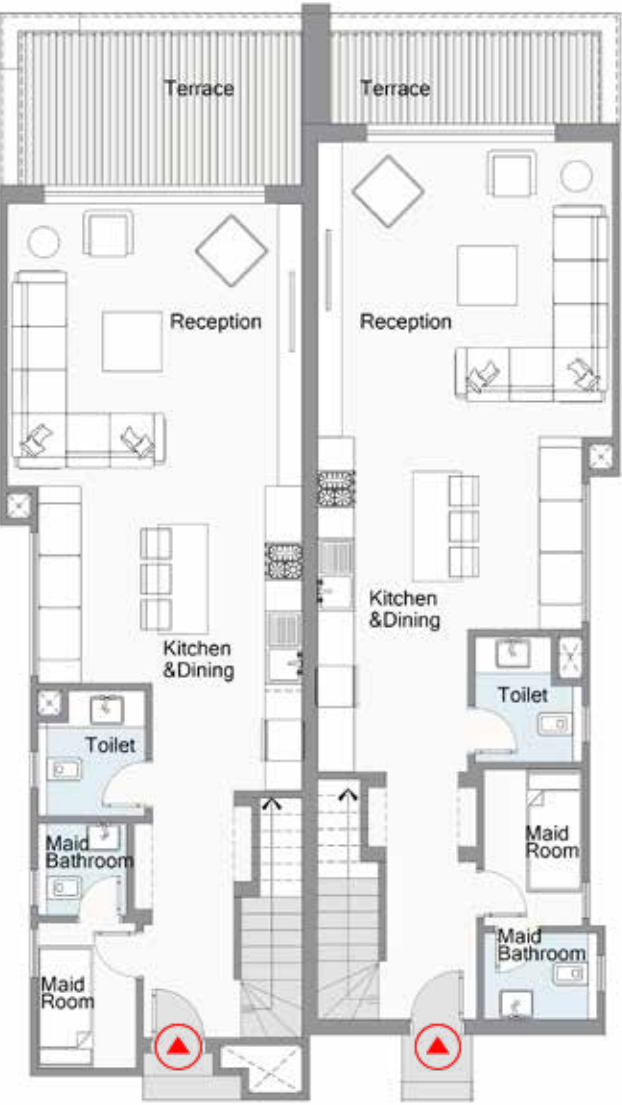
Master Bedroom	3.60 x 4.00 M ²
Master Bathroom	1.70 x 2.70 M ²
Master Dressing Room	1.70 x 2.70 M ²
Bedroom 01	3.60 x 4.00 M ²
Bathroom 01	1.70 x 2.70 M ²
Dressing Room 01	1.70 x 2.70 M ²
Bedroom 02	3.60 x 4.55 M ²
Bathroom 02	1.70 x 2.70 M ²
Dressing Room 02	1.70 x 1.75 M ²
Bedroom 03	3.60 x 4.00 M ²
Bathroom 03	1.70 x 2.70 M ²
Living Room	2.90 x 4.65 M ²
Terrace 01	1.80 x 6.10 M ²
Terrace 02	0.90 x 2.25 M ²

· THE CEILING MATERIALS OF SOME TYPICAL TERRACES ARE WOODEN LIKE MATERIAL OR AS SHOWN IN THE RENDERS.
 · CLADDING TYPE AND COLOR WILL BE SUBJECT TO AVAILABILITY AT THE TIME OF CONSTRUCTION.
 · PLANTING SHOWN IS FOR ILLUSTRATIVE PURPOSES ONLY.
 · DRAWINGS AND DIMENSIONS ARE FOR ILLUSTRATIVE PURPOSES AND ARE SUBJECT TO MODIFICATIONS AT THE DISCRETION OF THE DEVELOPER.



TWIN HOUSE

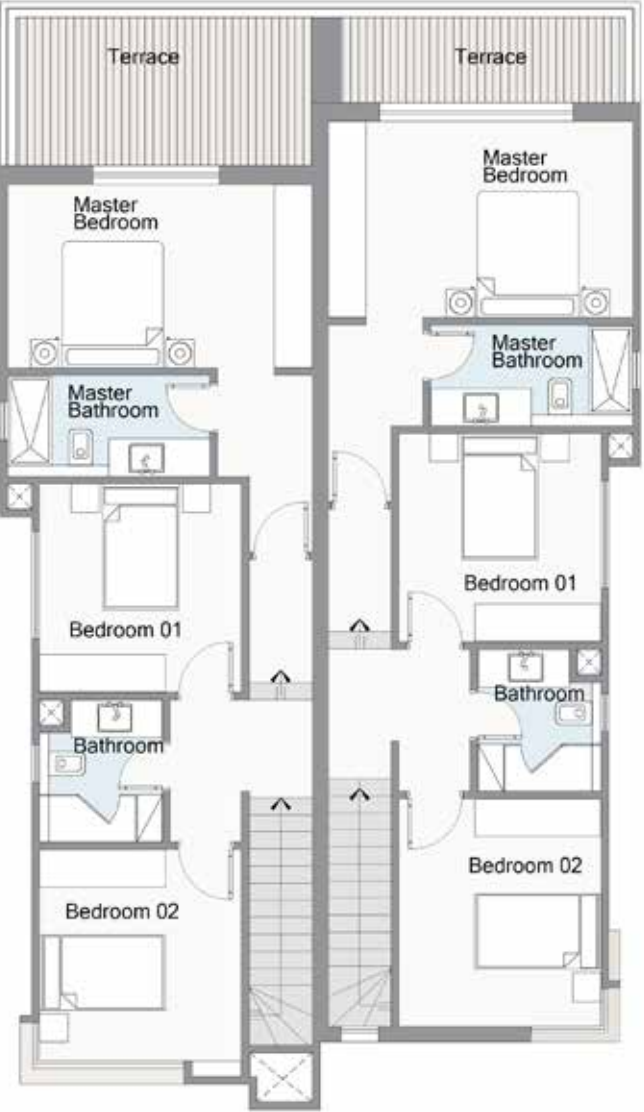
Ground Floor



- THE CEILING MATERIALS OF SOME TYPICAL TERRACES ARE WOODEN LIKE MATERIAL OR AS SHOWN IN THE RENDERS.
- CLADDING TYPE AND COLOR WILL BE SUBJECT TO AVAILABILITY AT THE TIME OF CONSTRUCTION.
- PLANTING SHOWN IS FOR ILLUSTRATIVE PURPOSES ONLY.
- DRAWINGS AND DIMENSIONS ARE FOR ILLUSTRATIVE PURPOSES AND ARE SUBJECT TO MODIFICATIONS AT THE DISCRETION OF THE DEVELOPER.

TWIN HOUSE

First Floor



- THE CEILING MATERIALS OF SOME TYPICAL TERRACES ARE WOODEN LIKE MATERIAL OR AS SHOWN IN THE RENDERS.
- CLADDING TYPE AND COLOR WILL BE SUBJECT TO AVAILABILITY AT THE TIME OF CONSTRUCTION.
- PLANTING SHOWN IS FOR ILLUSTRATIVE PURPOSES ONLY.
- DRAWINGS AND DIMENSIONS ARE FOR ILLUSTRATIVE PURPOSES AND ARE SUBJECT TO MODIFICATIONS AT THE DISCRETION OF THE DEVELOPER.

TWIN HOUSE UNIT A

Ground Floor



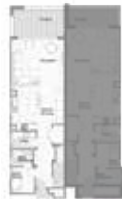
BUA 90 M²

CONFIGURATION

- 3 Bedrooms (1 Master)
- Maid room & bathroom

Reception	4.85 x 4.65 M ²
Kitchen & Dining	4.85 x 3.75 M ²
Toilet	2.25 x 1.55 M ²
Maid's room	2.40 x 2.10 M ²
Maid's bathroom	1.95 x 1.50 M ²
Terrace	4.95 x 2.80 M ²

· THE CEILING MATERIALS OF SOME TYPICAL TERRACES ARE WOODEN LIKE MATERIAL OR AS SHOWN IN THE RENDERS.
 · CLADDING TYPE AND COLOR WILL BE SUBJECT TO AVAILABILITY AT THE TIME OF CONSTRUCTION.
 · PLANTING SHOWN IS FOR ILLUSTRATIVE PURPOSES ONLY.
 · DRAWINGS AND DIMENSIONS ARE FOR ILLUSTRATIVE PURPOSES AND ARE SUBJECT TO MODIFICATIONS AT THE DISCRETION OF THE DEVELOPER.



TWIN HOUSE UNIT A

First Floor



BUA 90 M²
 TOTAL UNIT BUA 180 M²

Master Bedroom	4.85 x 2.90 M ²
Master Bathroom	3.20 x 1.60 M ²
Bedroom 01	3.70 x 3.30 M ²
Bathroom	2.45 x 2.25 M ²
Bedroom 02	3.70 x 3.35 M ²
Terrace	4.70 x 2.35 M ²

· THE CEILING MATERIALS OF SOME TYPICAL TERRACES ARE WOODEN LIKE MATERIAL OR AS SHOWN IN THE RENDERS.
 · CLADDING TYPE AND COLOR WILL BE SUBJECT TO AVAILABILITY AT THE TIME OF CONSTRUCTION.
 · PLANTING SHOWN IS FOR ILLUSTRATIVE PURPOSES ONLY.
 · DRAWINGS AND DIMENSIONS ARE FOR ILLUSTRATIVE PURPOSES AND ARE SUBJECT TO MODIFICATIONS AT THE DISCRETION OF THE DEVELOPER.



TWIN HOUSE UNIT B

Ground Floor

BUA 82 M²

CONFIGURATION

- 3 Bedrooms (1 Master)
- Maid room & bathroom



Reception	4.85 x 4.85 M ²
Kitchen & Dining	3.95x 4.85 M ²
Toilet	2.25 x 1.55 M ²
Maid's room	2.25 x 2.10 M ²
Maid's bathroom	2.35 x 1.40 M ²
Terrace	4.75 x 1.80 M ²

· THE CEILING MATERIALS OF SOME TYPICAL TERRACES ARE WOODEN LIKE MATERIAL OR AS SHOWN IN THE RENDERS.
 · CLADDING TYPE AND COLOR WILL BE SUBJECT TO AVAILABILITY AT THE TIME OF CONSTRUCTION.
 · PLANTING SHOWN IS FOR ILLUSTRATIVE PURPOSES ONLY.
 · DRAWINGS AND DIMENSIONS ARE FOR ILLUSTRATIVE PURPOSES AND ARE SUBJECT TO MODIFICATIONS AT THE DISCRETION OF THE DEVELOPER.



TWIN HOUSE UNIT B

First Floor

BUA 93 M²
 TOTAL UNIT BUA 175 M²



Master Bedroom	4.85 x 3.10 M ²
Master Bathroom	3.20 x 1.60 M ²
Bedroom 01	3.30 x 3.20 M ²
Bathroom	2.45 x 2.25 M ²
Bedroom 02	3.70 x 3.60 M ²
Terrace	4.50 x 1.35 M ²

· THE CEILING MATERIALS OF SOME TYPICAL TERRACES ARE WOODEN LIKE MATERIAL OR AS SHOWN IN THE RENDERS.
 · CLADDING TYPE AND COLOR WILL BE SUBJECT TO AVAILABILITY AT THE TIME OF CONSTRUCTION.
 · PLANTING SHOWN IS FOR ILLUSTRATIVE PURPOSES ONLY.
 · DRAWINGS AND DIMENSIONS ARE FOR ILLUSTRATIVE PURPOSES AND ARE SUBJECT TO MODIFICATIONS AT THE DISCRETION OF THE DEVELOPER.



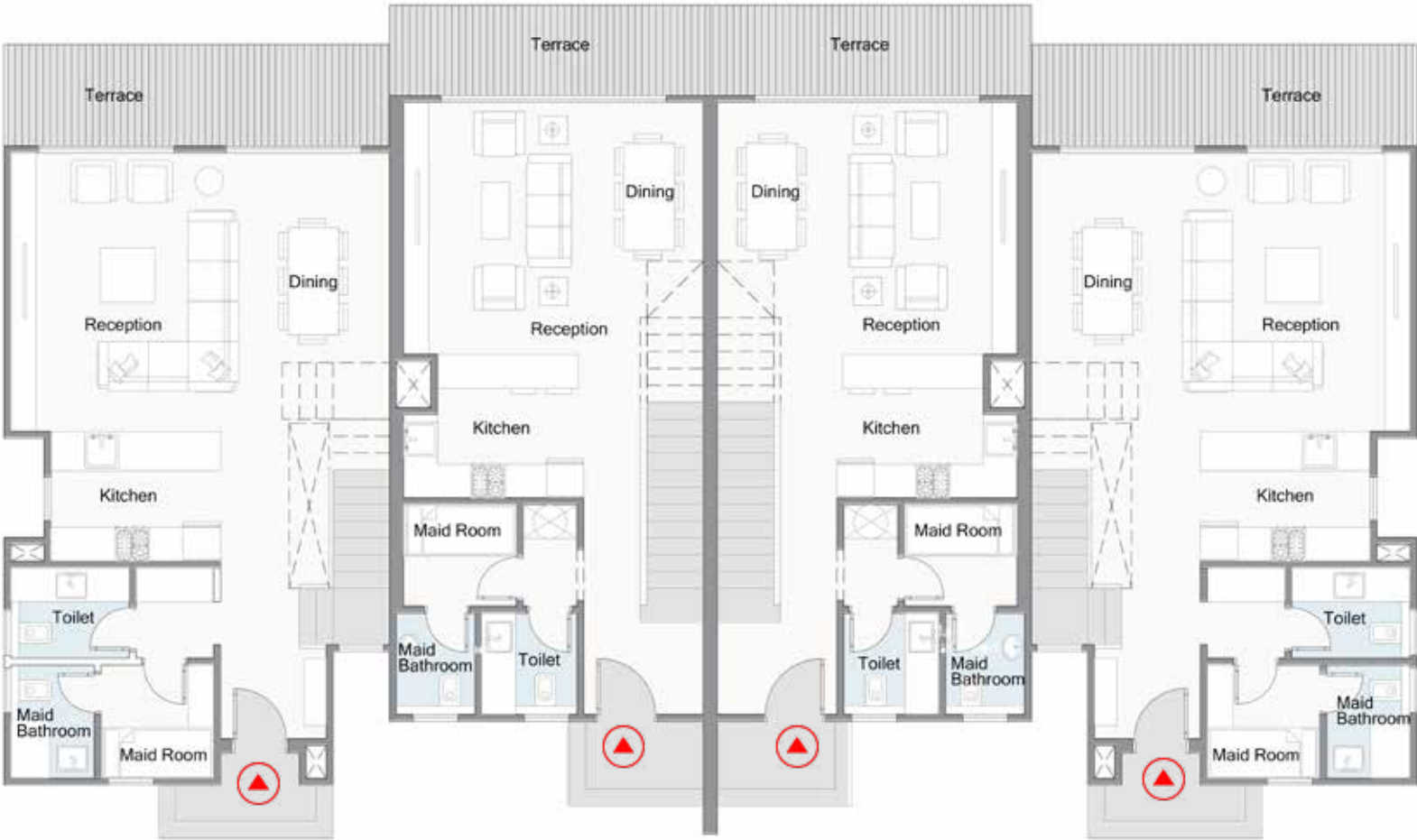
The background is a solid, muted brown color. It features several thick, light brown wavy lines that flow across the page. One line starts at the top left, curves down, and then flows towards the right. Another line starts at the bottom left, curves up, and flows towards the right. A third line starts at the top right, curves down, and flows towards the right. A small, solid light brown circle is positioned in the upper left quadrant.

TOWN HOUSE x4



TOWN HOUSE x4

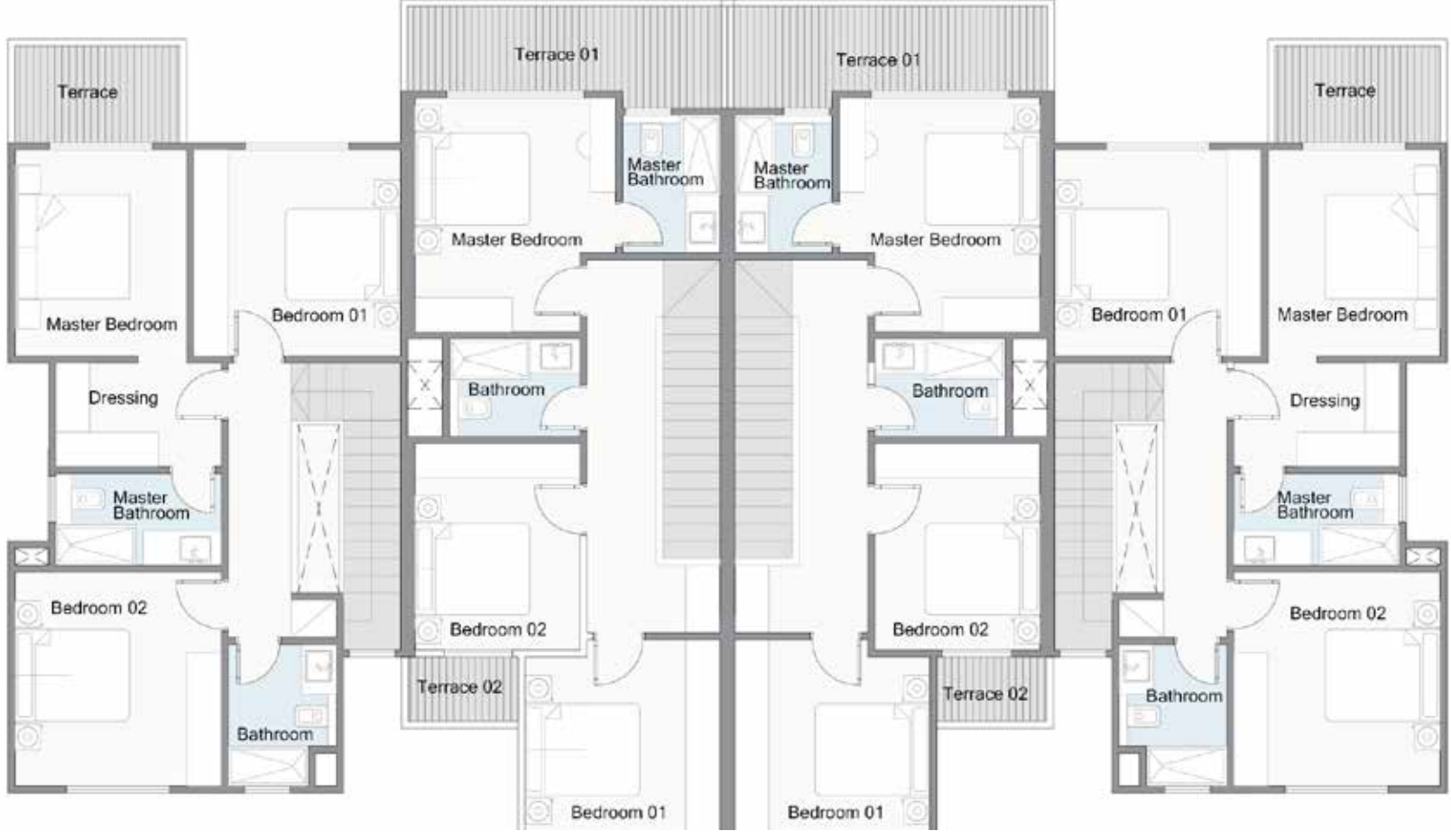
Ground Floor



- THE CEILING MATERIALS OF SOME TYPICAL TERRACES ARE WOODEN LIKE MATERIAL OR AS SHOWN IN THE RENDERS.
- CLADDING TYPE AND COLOR WILL BE SUBJECT TO AVAILABILITY AT THE TIME OF CONSTRUCTION.
- PLANTING SHOWN IS FOR ILLUSTRATIVE PURPOSES ONLY.
- DRAWINGS AND DIMENSIONS ARE FOR ILLUSTRATIVE PURPOSES AND ARE SUBJECT TO MODIFICATIONS AT THE DISCRETION OF THE DEVELOPER.

TOWN HOUSE x4

First Floor



- THE CEILING MATERIALS OF SOME TYPICAL TERRACES ARE WOODEN LIKE MATERIAL OR AS SHOWN IN THE RENDERS.
- CLADDING TYPE AND COLOR WILL BE SUBJECT TO AVAILABILITY AT THE TIME OF CONSTRUCTION.
- PLANTING SHOWN IS FOR ILLUSTRATIVE PURPOSES ONLY.
- DRAWINGS AND DIMENSIONS ARE FOR ILLUSTRATIVE PURPOSES AND ARE SUBJECT TO MODIFICATIONS AT THE DISCRETION OF THE DEVELOPER.

TOWN HOUSE x4 UNIT A-D

Ground Floor

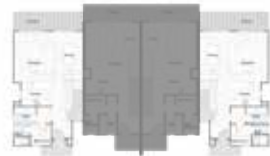
BUA 77 M²

CONFIGURATION

- 3 Bedrooms (1 Master)
- Maid room & bathroom



Reception	4.95 x 4.05 M ²
Dining	4.95 x 2.70 M ²
Kitchen	2.30 x 3.00 M ²
Toilet	1.60 x 2.10 M ²
Maid's room	2.00 x 2.00 M ²
Maid's bathroom	2.00 x 1.50 M ²



· THE CEILING MATERIALS OF SOME TYPICAL TERRACES ARE WOODEN LIKE MATERIAL OR AS SHOWN IN THE RENDERS.
 · CLADDING TYPE AND COLOR WILL BE SUBJECT TO AVAILABILITY AT THE TIME OF CONSTRUCTION.
 · PLANTING SHOWN IS FOR ILLUSTRATIVE PURPOSES ONLY.
 · DRAWINGS AND DIMENSIONS ARE FOR ILLUSTRATIVE PURPOSES AND ARE SUBJECT TO MODIFICATIONS AT THE DISCRETION OF THE DEVELOPER.

TOWN HOUSE x4 UNIT A-D

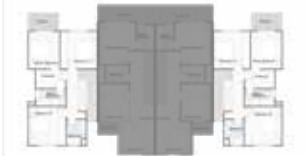
First Floor

BUA 85 M²

TOTAL UNIT BUA 162 M²



Master Bedroom	3.60 x 3.00 M ²
Master Bathroom	1.60 x 2.90 M ²
Dressing Room	1.80 x 2.90 M ²
Bedroom 01	3.60 x 3.60 M ²
Bathroom	2.50 x 1.90 M ²
Bedroom 02	3.75 x 3.70 M ²
Terrace	1.70 x 2.90 M ²



· THE CEILING MATERIALS OF SOME TYPICAL TERRACES ARE WOODEN LIKE MATERIAL OR AS SHOWN IN THE RENDERS.
 · CLADDING TYPE AND COLOR WILL BE SUBJECT TO AVAILABILITY AT THE TIME OF CONSTRUCTION.
 · PLANTING SHOWN IS FOR ILLUSTRATIVE PURPOSES ONLY.
 · DRAWINGS AND DIMENSIONS ARE FOR ILLUSTRATIVE PURPOSES AND ARE SUBJECT TO MODIFICATIONS AT THE DISCRETION OF THE DEVELOPER.

TOWN HOUSE x4 UNIT B-C

Ground Floor

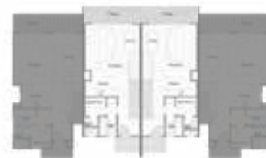


BUA 66 M²

CONFIGURATION

- 3 Bedrooms (1 Master)
- Maid room & bathroom

Reception	4.50 x 3.35 M ²
Dining	4.50 x 1.95 M ²
Kitchen	3.10 x 2.55 M ²
Toilet	1.80 x 1.70 M ²
Maid's room	2.00 x 1.80 M ²
Maid's bathroom	1.80 x 1.40 M ²



· THE CEILING MATERIALS OF SOME TYPICAL TERRACES ARE WOODEN LIKE MATERIAL OR AS SHOWN IN THE RENDERS.
 · CLADDING TYPE AND COLOR WILL BE SUBJECT TO AVAILABILITY AT THE TIME OF CONSTRUCTION.
 · PLANTING SHOWN IS FOR ILLUSTRATIVE PURPOSES ONLY.
 · DRAWINGS AND DIMENSIONS ARE FOR ILLUSTRATIVE PURPOSES AND ARE SUBJECT TO MODIFICATIONS AT THE DISCRETION OF THE DEVELOPER.

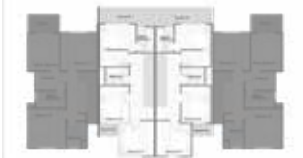
TOWN HOUSE x4 UNIT B-C

First Floor



BUA 84 M²
 TOTAL UNIT BUA 150 M²

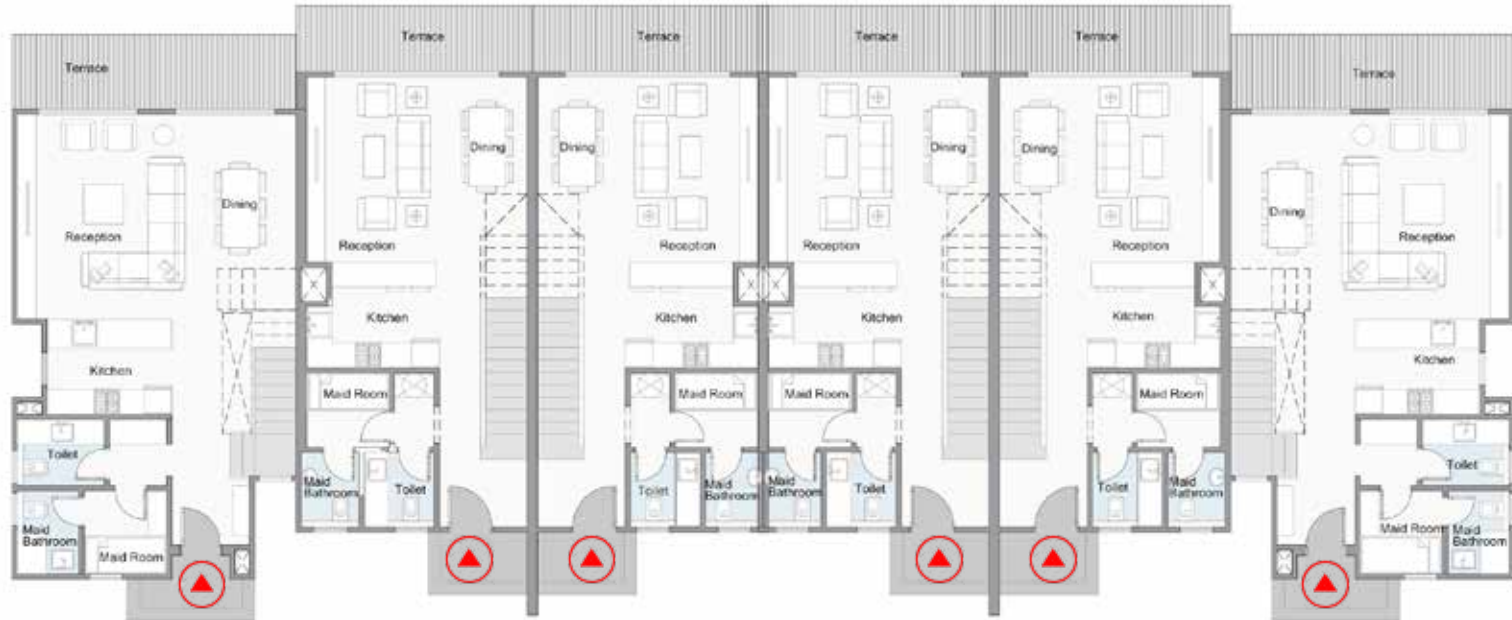
Master Bedroom	4.10 x 3.50 M ²
Master Bathroom	2.40 x 1.70 M ²
Bedroom 01	3.40 x 3.40 M ²
Bedroom 02	3.60 x 2.90 M ²
Bathroom	2.30 x 1.70 M ²
Terrace 01	5.45 x 1.65 M ²
Terrace 02	1.90 x 1.10 M ²



· THE CEILING MATERIALS OF SOME TYPICAL TERRACES ARE WOODEN LIKE MATERIAL OR AS SHOWN IN THE RENDERS.
 · CLADDING TYPE AND COLOR WILL BE SUBJECT TO AVAILABILITY AT THE TIME OF CONSTRUCTION.
 · PLANTING SHOWN IS FOR ILLUSTRATIVE PURPOSES ONLY.
 · DRAWINGS AND DIMENSIONS ARE FOR ILLUSTRATIVE PURPOSES AND ARE SUBJECT TO MODIFICATIONS AT THE DISCRETION OF THE DEVELOPER.

TOWN HOUSE x6

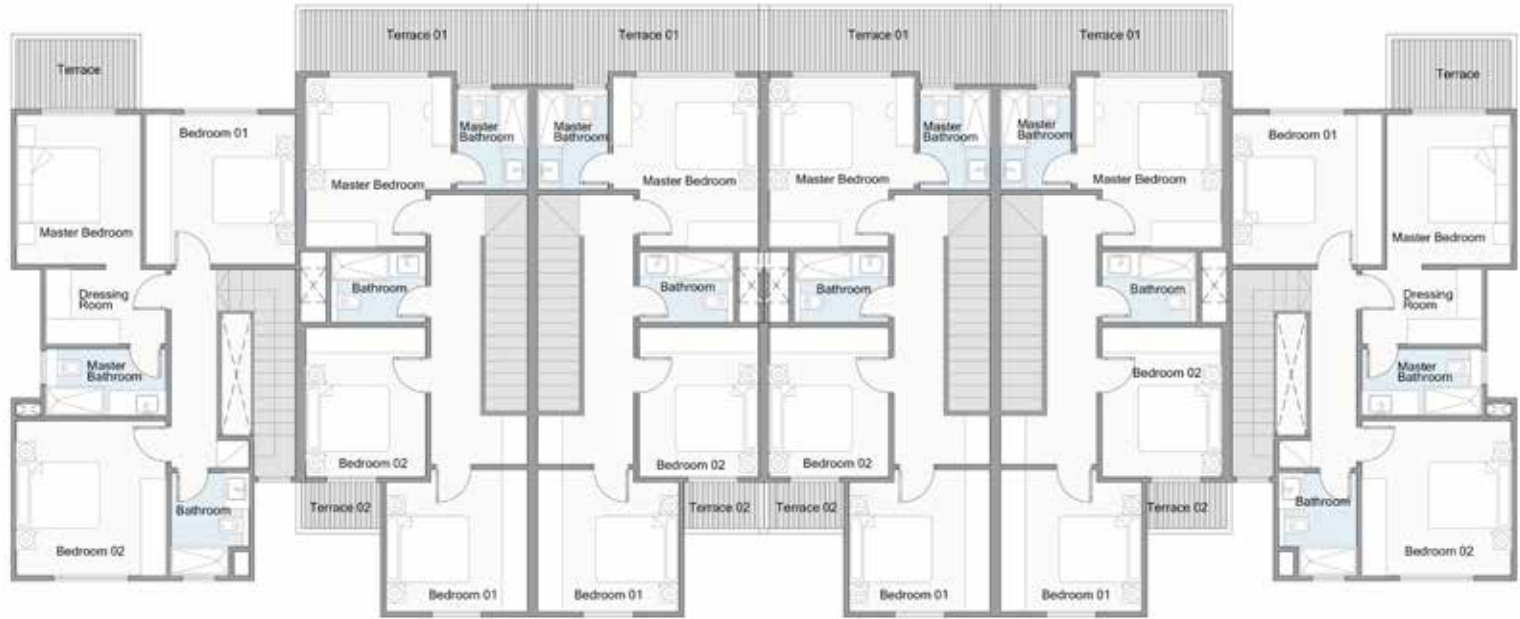
Ground Floor



- THE CEILING MATERIALS OF SOME TYPICAL TERRACES ARE WOODEN LIKE MATERIAL OR AS SHOWN IN THE RENDERS.
- CLADDING TYPE AND COLOR WILL BE SUBJECT TO AVAILABILITY AT THE TIME OF CONSTRUCTION.
- PLANTING SHOWN IS FOR ILLUSTRATIVE PURPOSES ONLY.
- DRAWINGS AND DIMENSIONS ARE FOR ILLUSTRATIVE PURPOSES AND ARE SUBJECT TO MODIFICATIONS AT THE DISCRETION OF THE DEVELOPER.

TOWN HOUSE x6

First Floor



- THE CEILING MATERIALS OF SOME TYPICAL TERRACES ARE WOODEN LIKE MATERIAL OR AS SHOWN IN THE RENDERS.
- CLADDING TYPE AND COLOR WILL BE SUBJECT TO AVAILABILITY AT THE TIME OF CONSTRUCTION.
- PLANTING SHOWN IS FOR ILLUSTRATIVE PURPOSES ONLY.
- DRAWINGS AND DIMENSIONS ARE FOR ILLUSTRATIVE PURPOSES AND ARE SUBJECT TO MODIFICATIONS AT THE DISCRETION OF THE DEVELOPER.

TOWN HOUSE x6 UNIT A-F

Ground Floor

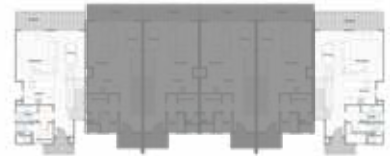


BUA 77 M²

CONFIGURATION

- 3 Bedrooms (1 Master)
- Maid room & bathroom

Reception	4.95 x 4.05 M ²
Dining	4.95 x 2.70 M ²
Kitchen	3.00 x 2.30 M ²
Toilet	2.10 x 1.60 M ²
Maid's room	2.00 x 2.00 M ²
Maid's bathroom	2.00 x 1.50 M ²



· THE CEILING MATERIALS OF SOME TYPICAL TERRACES ARE WOODEN LIKE MATERIAL OR AS SHOWN IN THE RENDERS.
 · CLADDING TYPE AND COLOR WILL BE SUBJECT TO AVAILABILITY AT THE TIME OF CONSTRUCTION.
 · PLANTING SHOWN IS FOR ILLUSTRATIVE PURPOSES ONLY.
 · DRAWINGS AND DIMENSIONS ARE FOR ILLUSTRATIVE PURPOSES AND ARE SUBJECT TO MODIFICATIONS AT THE DISCRETION OF THE DEVELOPER.

TOWN HOUSE x6 UNIT A-F

First Floor



BUA 85 M²
 TOTAL UNIT BUA 162 M²

Master Bedroom	3.60 x 3.00 M ²
Master Bathroom	2.90 x 1.60 M ²
Dressing Room	2.90 x 1.80 M ²
Bedroom 01	3.60 x 3.60 M ²
Bathroom	2.50 x 1.90 M ²
Bedroom 02	3.75 x 3.70 M ²
Terrace	2.90 x 1.70 M ²



· THE CEILING MATERIALS OF SOME TYPICAL TERRACES ARE WOODEN LIKE MATERIAL OR AS SHOWN IN THE RENDERS.
 · CLADDING TYPE AND COLOR WILL BE SUBJECT TO AVAILABILITY AT THE TIME OF CONSTRUCTION.
 · PLANTING SHOWN IS FOR ILLUSTRATIVE PURPOSES ONLY.
 · DRAWINGS AND DIMENSIONS ARE FOR ILLUSTRATIVE PURPOSES AND ARE SUBJECT TO MODIFICATIONS AT THE DISCRETION OF THE DEVELOPER.

TOWN HOUSE x6 UNIT B-C-D-E

Ground Floor

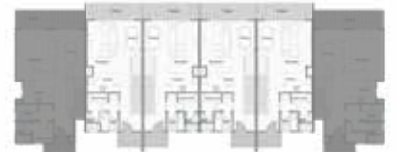
BUA 66 M²

CONFIGURATION

- 3 Bedrooms (1 Master)
- Maid room & bathroom



Reception	4.50 x 3.35 M ²
Dining	4.50 x 1.95 M ²
Kitchen	3.10 x 2.55 M ²
Toilet	1.80 x 1.60 M ²
Maid's room	2.00 x 1.80 M ²
Maid's bathroom	1.80 x 1.40 M ²



· THE CEILING MATERIALS OF SOME TYPICAL TERRACES ARE WOODEN LIKE MATERIAL OR AS SHOWN IN THE RENDERS.
 · CLADDING TYPE AND COLOR WILL BE SUBJECT TO AVAILABILITY AT THE TIME OF CONSTRUCTION.
 · PLANTING SHOWN IS FOR ILLUSTRATIVE PURPOSES ONLY.
 · DRAWINGS AND DIMENSIONS ARE FOR ILLUSTRATIVE PURPOSES AND ARE SUBJECT TO MODIFICATIONS AT THE DISCRETION OF THE DEVELOPER.

TOWN HOUSE x6 UNIT B-C-D-E

First Floor

BUA 84 M²

TOTAL UNIT BUA 150 M²



Master Bedroom	4.10 x 3.50 M ²
Master Bathroom	2.40 x 1.70 M ²
Bedroom 01	3.40 x 3.40 M ²
Bedroom 02	3.60 x 2.90 M ²
Bathroom	2.30 x 1.70 M ²
Terrace 01	5.45 x 1.65 M ²
Terrace 02	1.90 x 1.10 M ²



· THE CEILING MATERIALS OF SOME TYPICAL TERRACES ARE WOODEN LIKE MATERIAL OR AS SHOWN IN THE RENDERS.
 · CLADDING TYPE AND COLOR WILL BE SUBJECT TO AVAILABILITY AT THE TIME OF CONSTRUCTION.
 · PLANTING SHOWN IS FOR ILLUSTRATIVE PURPOSES ONLY.
 · DRAWINGS AND DIMENSIONS ARE FOR ILLUSTRATIVE PURPOSES AND ARE SUBJECT TO MODIFICATIONS AT THE DISCRETION OF THE DEVELOPER.



HORIZON CHALET



HORIZON

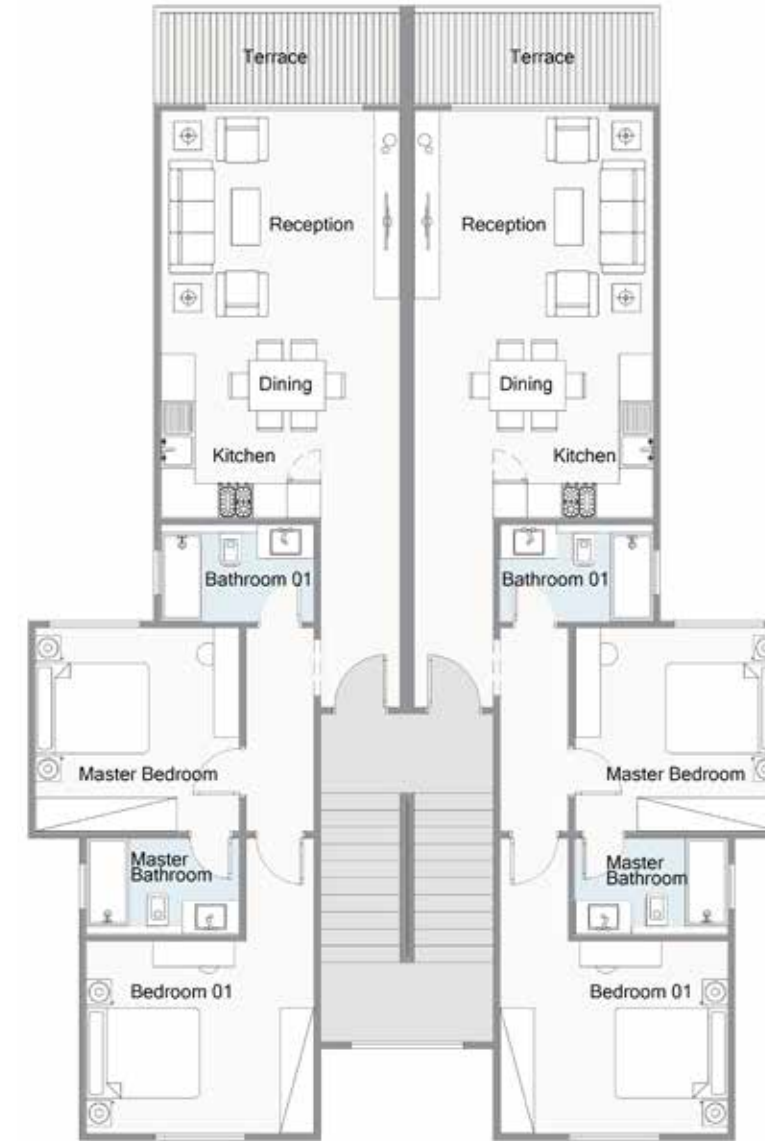
Ground Floor



- THE CEILING MATERIALS OF SOME TYPICAL TERRACES ARE WOODEN LIKE MATERIAL OR AS SHOWN IN THE RENDERS.
- CLADDING TYPE AND COLOR WILL BE SUBJECT TO AVAILABILITY AT THE TIME OF CONSTRUCTION.
- PLANTING SHOWN IS FOR ILLUSTRATIVE PURPOSES ONLY.
- DRAWINGS AND DIMENSIONS ARE FOR ILLUSTRATIVE PURPOSES AND ARE SUBJECT TO MODIFICATIONS AT THE DISCRETION OF THE DEVELOPER.

HORIZON

Typical Floor (First/Second)



- THE CEILING MATERIALS OF SOME TYPICAL TERRACES ARE WOODEN LIKE MATERIAL OR AS SHOWN IN THE RENDERS.
- CLADDING TYPE AND COLOR WILL BE SUBJECT TO AVAILABILITY AT THE TIME OF CONSTRUCTION.
- PLANTING SHOWN IS FOR ILLUSTRATIVE PURPOSES ONLY.
- DRAWINGS AND DIMENSIONS ARE FOR ILLUSTRATIVE PURPOSES AND ARE SUBJECT TO MODIFICATIONS AT THE DISCRETION OF THE DEVELOPER.

HORIZON UNIT A

Ground Floor



BUA 99 M²

CONFIGURATION

- 2 Bedrooms (1 Master)
- Maid room & bathroom

Reception	4.05 x 4.25 M ²
Kitchen & Dining	3.15 x 4.25 M ²
Master bedroom	3.60 x 3.60 M ²
Master bathroom	1.70 x 2.70 M ²
Bedroom	3.40 x 4.05 M ²
Bathroom	1.70 x 2.70 M ²
Terrace	1.75 x 4.35 M ²

· THE CEILING MATERIALS OF SOME TYPICAL TERRACES ARE WOODEN LIKE MATERIAL OR AS SHOWN IN THE RENDERS.
 · CLADDING TYPE AND COLOR WILL BE SUBJECT TO AVAILABILITY AT THE TIME OF CONSTRUCTION.
 · PLANTING SHOWN IS FOR ILLUSTRATIVE PURPOSES ONLY.
 · DRAWINGS AND DIMENSIONS ARE FOR ILLUSTRATIVE PURPOSES AND ARE SUBJECT TO MODIFICATIONS AT THE DISCRETION OF THE DEVELOPER.



HORIZON UNIT B

Ground Floor



BUA 99 M²

Reception	4.05 x 4.25 M ²
Kitchen & Dining	3.15 x 4.25 M ²
Master bedroom	3.60 x 3.60 M ²
Master bathroom	1.70 x 2.70 M ²
Bedroom	3.40 x 4.05 M ²
Bathroom	1.70 x 2.70 M ²
Terrace	1.75 x 4.35 M ²

· THE CEILING MATERIALS OF SOME TYPICAL TERRACES ARE WOODEN LIKE MATERIAL OR AS SHOWN IN THE RENDERS.
 · CLADDING TYPE AND COLOR WILL BE SUBJECT TO AVAILABILITY AT THE TIME OF CONSTRUCTION.
 · PLANTING SHOWN IS FOR ILLUSTRATIVE PURPOSES ONLY.
 · DRAWINGS AND DIMENSIONS ARE FOR ILLUSTRATIVE PURPOSES AND ARE SUBJECT TO MODIFICATIONS AT THE DISCRETION OF THE DEVELOPER.



HORIZON UNIT C-E

Typical Floor (First/Second)



BUA 108 M²

CONFIGURATION

· 2 Bedrooms (1 Master)

Reception	4.05 x 4.25 M ²
Kitchen & Dining	3.15 x 4.25 M ²
Master bedroom	3.60 x 3.60 M ²
Master bathroom	1.70 x 2.70 M ²
Bedroom	3.40 x 4.05 M ²
Bathroom	1.70 x 2.70 M ²
Terrace	1.60 x 4.25 M ²

· THE CEILING MATERIALS OF SOME TYPICAL TERRACES ARE WOODEN LIKE MATERIAL OR AS SHOWN IN THE RENDERS.
 · CLADDING TYPE AND COLOR WILL BE SUBJECT TO AVAILABILITY AT THE TIME OF CONSTRUCTION.
 · PLANTING SHOWN IS FOR ILLUSTRATIVE PURPOSES ONLY.
 · DRAWINGS AND DIMENSIONS ARE FOR ILLUSTRATIVE PURPOSES AND ARE SUBJECT TO MODIFICATIONS AT THE DISCRETION OF THE DEVELOPER.



HORIZON UNIT D-F

Typical Floor (First/Second)



BUA 108 M²

Reception	4.05 x 4.25 M ²
Kitchen & Dining	3.15 x 4.25 M ²
Master bedroom	3.60 x 3.60 M ²
Master bathroom	1.70 x 2.70 M ²
Bedroom	3.40 x 4.05 M ²
Bathroom	1.70 x 2.70 M ²
Terrace	1.60 x 4.25 M ²

· THE CEILING MATERIALS OF SOME TYPICAL TERRACES ARE WOODEN LIKE MATERIAL OR AS SHOWN IN THE RENDERS.
 · CLADDING TYPE AND COLOR WILL BE SUBJECT TO AVAILABILITY AT THE TIME OF CONSTRUCTION.
 · PLANTING SHOWN IS FOR ILLUSTRATIVE PURPOSES ONLY.
 · DRAWINGS AND DIMENSIONS ARE FOR ILLUSTRATIVE PURPOSES AND ARE SUBJECT TO MODIFICATIONS AT THE DISCRETION OF THE DEVELOPER.



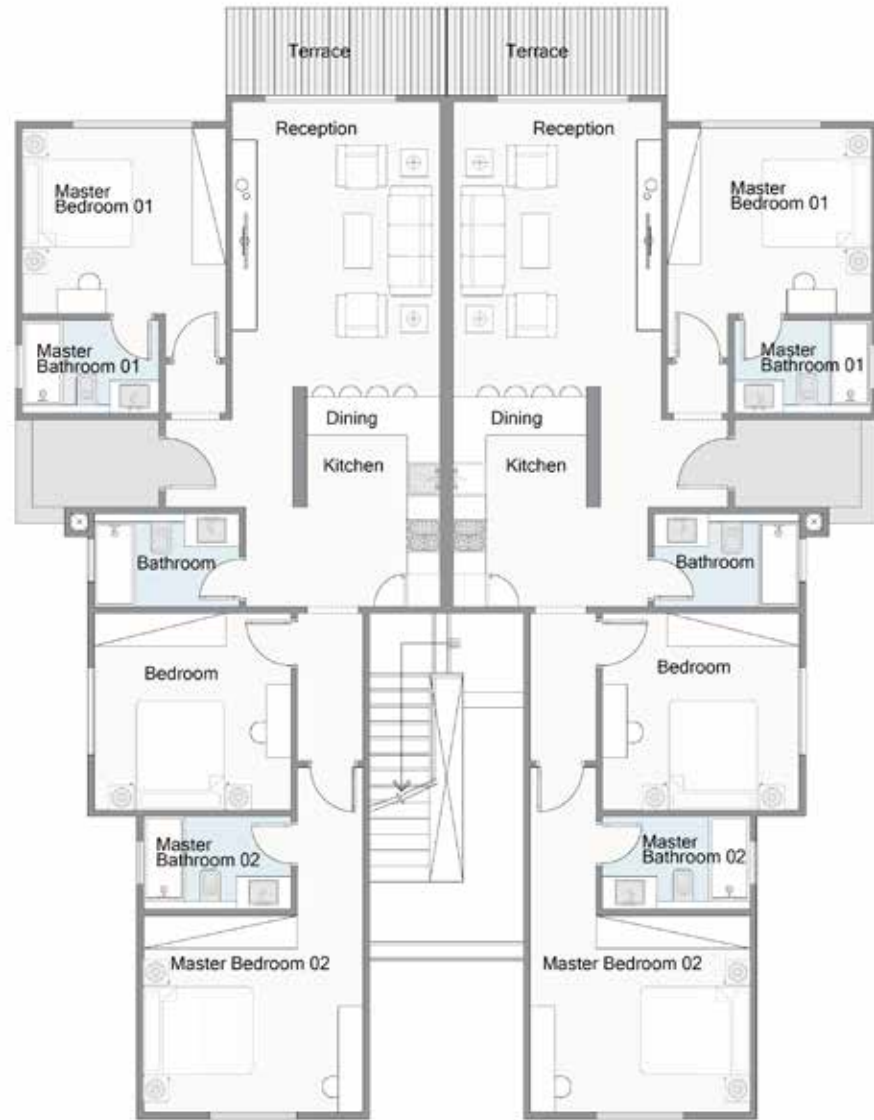
The background is a solid light brown color. It features several thick, wavy, light-colored lines that flow across the page. On the left side, there is a small, solid light-colored circle.

LEVELS CHALET



LEVELS

Ground Floor



- THE CEILING MATERIALS OF SOME TYPICAL TERRACES ARE WOODEN LIKE MATERIAL OR AS SHOWN IN THE RENDERS.
- CLADDING TYPE AND COLOR WILL BE SUBJECT TO AVAILABILITY AT THE TIME OF CONSTRUCTION.
- PLANTING SHOWN IS FOR ILLUSTRATIVE PURPOSES ONLY.
- DRAWINGS AND DIMENSIONS ARE FOR ILLUSTRATIVE PURPOSES AND ARE SUBJECT TO MODIFICATIONS AT THE DISCRETION OF THE DEVELOPER.

LEVELS

Typical Floor (First/Second)



- THE CEILING MATERIALS OF SOME TYPICAL TERRACES ARE WOODEN LIKE MATERIAL OR AS SHOWN IN THE RENDERS.
- CLADDING TYPE AND COLOR WILL BE SUBJECT TO AVAILABILITY AT THE TIME OF CONSTRUCTION.
- PLANTING SHOWN IS FOR ILLUSTRATIVE PURPOSES ONLY.
- DRAWINGS AND DIMENSIONS ARE FOR ILLUSTRATIVE PURPOSES AND ARE SUBJECT TO MODIFICATIONS AT THE DISCRETION OF THE DEVELOPER.

LEVELS UNIT A

Ground Floor



BUA 125 M²

CONFIGURATION

· 3 Bedrooms (2 Master)

Reception	5.20 x 3.80 M ²
Kitchen & Dining	4.00 x 2.70 M ²
Master bedroom 01	3.75 x 3.40 M ²
Master bathroom 01	2.50 x 1.70 M ²
Master bedroom 02	4.05 x 3.60 M ²
Master bathroom 02	2.70 x 1.70 M ²
Bedroom	3.60 x 3.60 M ²
Bathroom	2.65 x 1.70 M ²
Terrace	4.05 x 1.60 M ²



· THE CEILING MATERIALS OF SOME TYPICAL TERRACES ARE WOODEN LIKE MATERIAL OR AS SHOWN IN THE RENDERS.
 · CLADDING TYPE AND COLOR WILL BE SUBJECT TO AVAILABILITY AT THE TIME OF CONSTRUCTION.
 · PLANTING SHOWN IS FOR ILLUSTRATIVE PURPOSES ONLY.
 · DRAWINGS AND DIMENSIONS ARE FOR ILLUSTRATIVE PURPOSES AND ARE SUBJECT TO MODIFICATIONS AT THE DISCRETION OF THE DEVELOPER.

LEVELS UNIT B

Ground Floor



BUA 125 M²

Reception	5.20 x 3.80 M ²
Kitchen & Dining	4.00 x 2.70 M ²
Master bedroom 01	3.75 x 3.40 M ²
Master bathroom 01	2.50 x 1.70 M ²
Master bedroom 02	4.05 x 3.60 M ²
Master bathroom 02	2.70 x 1.70 M ²
Bedroom	3.60 x 3.60 M ²
Bathroom	2.65 x 1.70 M ²
Terrace	4.05 x 1.60 M ²



· THE CEILING MATERIALS OF SOME TYPICAL TERRACES ARE WOODEN LIKE MATERIAL OR AS SHOWN IN THE RENDERS.
 · CLADDING TYPE AND COLOR WILL BE SUBJECT TO AVAILABILITY AT THE TIME OF CONSTRUCTION.
 · PLANTING SHOWN IS FOR ILLUSTRATIVE PURPOSES ONLY.
 · DRAWINGS AND DIMENSIONS ARE FOR ILLUSTRATIVE PURPOSES AND ARE SUBJECT TO MODIFICATIONS AT THE DISCRETION OF THE DEVELOPER.

LEVELS UNIT C-E

Typical Floor (First/Second)



BUA 130 M²

CONFIGURATION

· 3 Bedrooms (1 Master)

Reception	4.05 x 3.80 M ²
Kitchen & Dining	3.80 x 3.80 M ²
Master bedroom 01	3.75 x 3.40 M ²
Master bathroom 01	2.50 x 1.70 M ²
Toilet	1.70 x 1.60 M ²
Bedroom 01	3.60 x 3.60 M ²
Bedroom 02	4.05 x 3.60 M ²
Bathroom	2.70 x 1.70 M ²
Terrace	3.85 x 1.75 M ²



· THE CEILING MATERIALS OF SOME TYPICAL TERRACES ARE WOODEN LIKE MATERIAL OR AS SHOWN IN THE RENDERS.
 · CLADDING TYPE AND COLOR WILL BE SUBJECT TO AVAILABILITY AT THE TIME OF CONSTRUCTION.
 · PLANTING SHOWN IS FOR ILLUSTRATIVE PURPOSES ONLY.
 · DRAWINGS AND DIMENSIONS ARE FOR ILLUSTRATIVE PURPOSES AND ARE SUBJECT TO MODIFICATIONS AT THE DISCRETION OF THE DEVELOPER.

LEVELS UNIT D-F

Typical Floor (First/Second)



BUA 130 M²

Reception	4.05 x 3.80 M ²
Kitchen & Dining	3.80 x 3.80 M ²
Master bedroom 01	3.75 x 3.40 M ²
Master bathroom 01	2.50 x 1.70 M ²
Toilet	1.70 x 1.60 M ²
Bedroom 01	3.60 x 3.60 M ²
Bedroom 02	4.05 x 3.60 M ²
Bathroom	2.70 x 1.70 M ²
Terrace	3.85 x 1.75 M ²



· THE CEILING MATERIALS OF SOME TYPICAL TERRACES ARE WOODEN LIKE MATERIAL OR AS SHOWN IN THE RENDERS.
 · CLADDING TYPE AND COLOR WILL BE SUBJECT TO AVAILABILITY AT THE TIME OF CONSTRUCTION.
 · PLANTING SHOWN IS FOR ILLUSTRATIVE PURPOSES ONLY.
 · DRAWINGS AND DIMENSIONS ARE FOR ILLUSTRATIVE PURPOSES AND ARE SUBJECT TO MODIFICATIONS AT THE DISCRETION OF THE DEVELOPER.

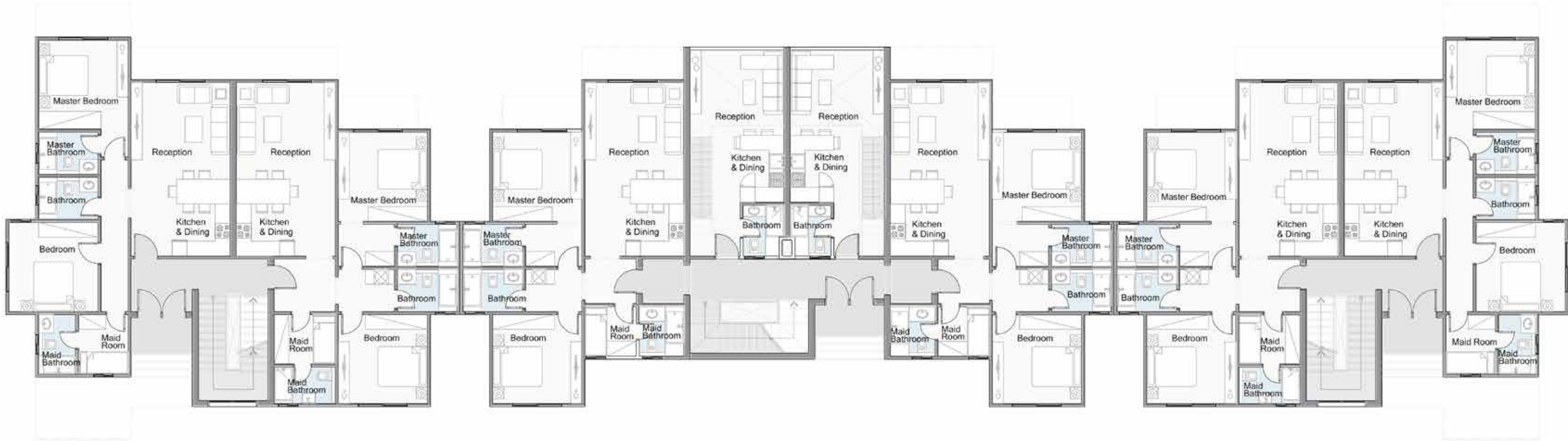


SKY CHALET



SKY CHALET

Ground Floor

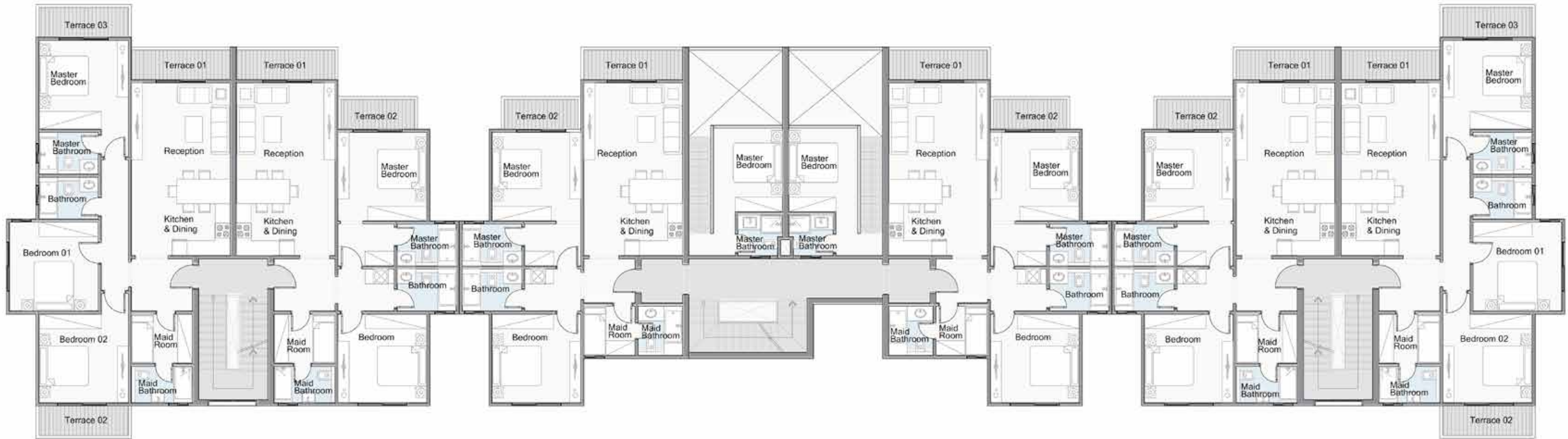


· THE CEILING MATERIALS OF SOME TYPICAL TERRACES ARE WOODEN LIKE MATERIAL OR AS SHOWN IN THE RENDERS.
· CLADDING TYPE AND COLOR WILL BE SUBJECT TO AVAILABILITY AT THE TIME OF CONSTRUCTION.
· PLANTING SHOWN IS FOR ILLUSTRATIVE PURPOSES ONLY.
· DRAWINGS AND DIMENSIONS ARE FOR ILLUSTRATIVE PURPOSES AND ARE SUBJECT TO MODIFICATIONS AT THE DISCRETION OF THE DEVELOPER.

· THE CEILING MATERIALS OF SOME TYPICAL TERRACES ARE WOODEN LIKE MATERIAL OR AS SHOWN IN THE RENDERS.
· CLADDING TYPE AND COLOR WILL BE SUBJECT TO AVAILABILITY AT THE TIME OF CONSTRUCTION.
· PLANTING SHOWN IS FOR ILLUSTRATIVE PURPOSES ONLY.
· DRAWINGS AND DIMENSIONS ARE FOR ILLUSTRATIVE PURPOSES AND ARE SUBJECT TO MODIFICATIONS AT THE DISCRETION OF THE DEVELOPER.

SKY CHALET

First Floor

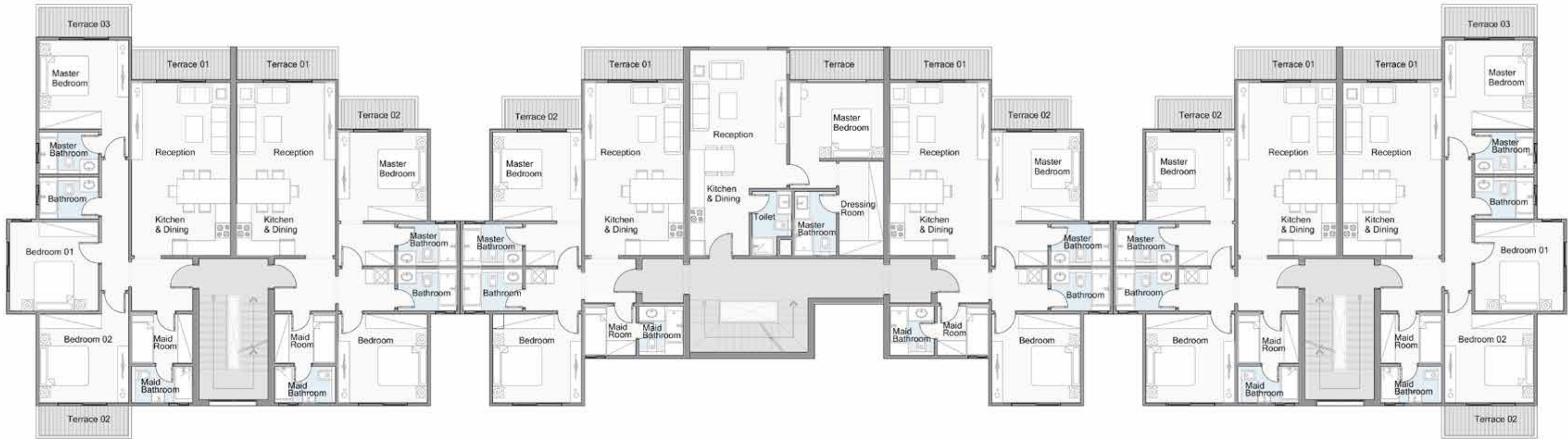


· THE CEILING MATERIALS OF SOME TYPICAL TERRACES ARE WOODEN LIKE MATERIAL OR AS SHOWN IN THE RENDERS.
· CLADDING TYPE AND COLOR WILL BE SUBJECT TO AVAILABILITY AT THE TIME OF CONSTRUCTION.
· PLANTING SHOWN IS FOR ILLUSTRATIVE PURPOSES ONLY.
· DRAWINGS AND DIMENSIONS ARE FOR ILLUSTRATIVE PURPOSES AND ARE SUBJECT TO MODIFICATIONS AT THE DISCRETION OF THE DEVELOPER.

· THE CEILING MATERIALS OF SOME TYPICAL TERRACES ARE WOODEN LIKE MATERIAL OR AS SHOWN IN THE RENDERS.
· CLADDING TYPE AND COLOR WILL BE SUBJECT TO AVAILABILITY AT THE TIME OF CONSTRUCTION.
· PLANTING SHOWN IS FOR ILLUSTRATIVE PURPOSES ONLY.
· DRAWINGS AND DIMENSIONS ARE FOR ILLUSTRATIVE PURPOSES AND ARE SUBJECT TO MODIFICATIONS AT THE DISCRETION OF THE DEVELOPER.

SKY CHALET

Second Floor



· THE CEILING MATERIALS OF SOME TYPICAL TERRACES ARE WOODEN LIKE MATERIAL OR AS SHOWN IN THE RENDERS.
· CLADDING TYPE AND COLOR WILL BE SUBJECT TO AVAILABILITY AT THE TIME OF CONSTRUCTION.
· PLANTING SHOWN IS FOR ILLUSTRATIVE PURPOSES ONLY.
· DRAWINGS AND DIMENSIONS ARE FOR ILLUSTRATIVE PURPOSES AND ARE SUBJECT TO MODIFICATIONS AT THE DISCRETION OF THE DEVELOPER.

· THE CEILING MATERIALS OF SOME TYPICAL TERRACES ARE WOODEN LIKE MATERIAL OR AS SHOWN IN THE RENDERS.
· CLADDING TYPE AND COLOR WILL BE SUBJECT TO AVAILABILITY AT THE TIME OF CONSTRUCTION.
· PLANTING SHOWN IS FOR ILLUSTRATIVE PURPOSES ONLY.
· DRAWINGS AND DIMENSIONS ARE FOR ILLUSTRATIVE PURPOSES AND ARE SUBJECT TO MODIFICATIONS AT THE DISCRETION OF THE DEVELOPER.

SKY CHALET UNIT A

Ground Floor



BUA 101 M²

CONFIGURATION

- 2 Bedrooms (1 Master)
- Maids room & bathroom

Reception	4.00 x 3.55 M ²
Kitchen & Dining	4.00 x 3.45 M ²
Maid's room	2.40 x 2.00 M ²
Maid's bathroom	2.40 x 1.50 M ²
Master bedroom	3.65 x 3.60 M ²
Master bathroom	2.40 x 1.70 M ²
Bedroom	3.60 x 3.60 M ²
Bathroom	2.40 x 1.70 M ²



· THE CEILING MATERIALS OF SOME TYPICAL TERRACES ARE WOODEN LIKE MATERIAL OR AS SHOWN IN THE RENDERS.
 · CLADDING TYPE AND COLOR WILL BE SUBJECT TO AVAILABILITY AT THE TIME OF CONSTRUCTION.
 · PLANTING SHOWN IS FOR ILLUSTRATIVE PURPOSES ONLY.
 · DRAWINGS AND DIMENSIONS ARE FOR ILLUSTRATIVE PURPOSES AND ARE SUBJECT TO MODIFICATIONS AT THE DISCRETION OF THE DEVELOPER.

SKY CHALET UNIT H

Ground Floor



BUA 101 M²

CONFIGURATION

- 2 Bedrooms (1 Master)
- Maids room & bathroom

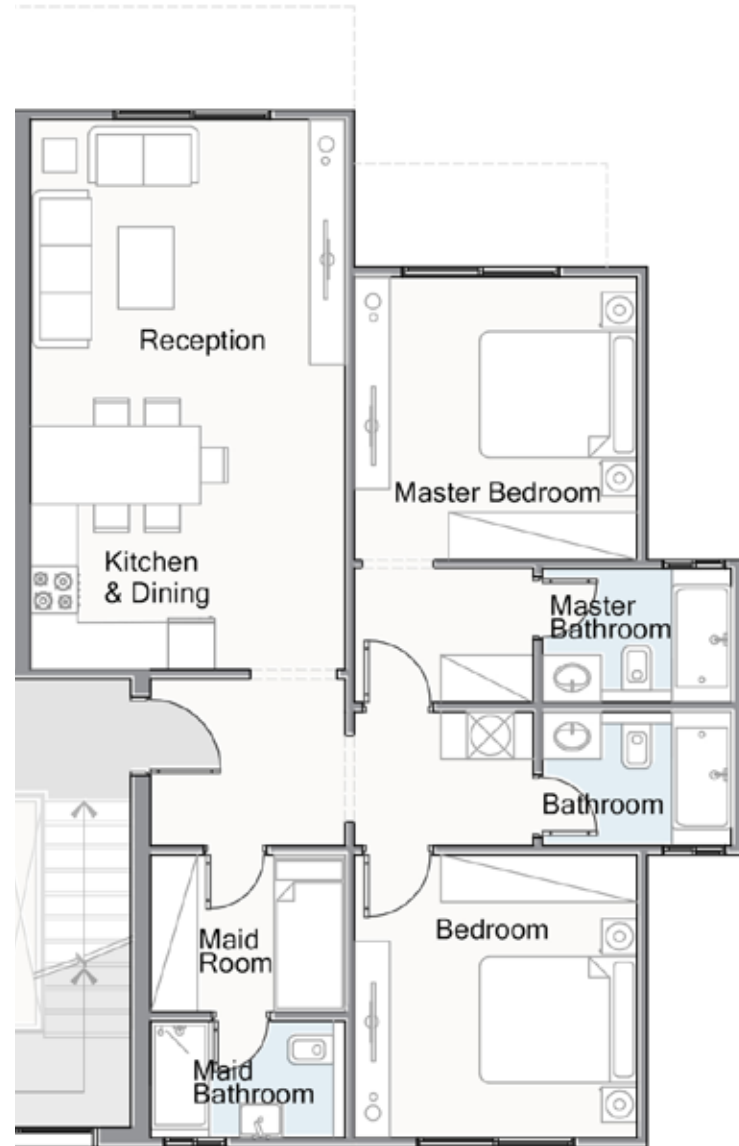
Reception	4.00 x 3.55 M ²
Kitchen & Dining	4.00 x 3.45 M ²
Maid's room	2.40 x 2.00 M ²
Maid's bathroom	2.40 x 1.50 M ²
Master bedroom	3.65 x 3.60 M ²
Master bathroom	2.40 x 1.70 M ²
Bedroom	3.60 x 3.60 M ²
Bathroom	2.40 x 1.70 M ²



· THE CEILING MATERIALS OF SOME TYPICAL TERRACES ARE WOODEN LIKE MATERIAL OR AS SHOWN IN THE RENDERS.
 · CLADDING TYPE AND COLOR WILL BE SUBJECT TO AVAILABILITY AT THE TIME OF CONSTRUCTION.
 · PLANTING SHOWN IS FOR ILLUSTRATIVE PURPOSES ONLY.
 · DRAWINGS AND DIMENSIONS ARE FOR ILLUSTRATIVE PURPOSES AND ARE SUBJECT TO MODIFICATIONS AT THE DISCRETION OF THE DEVELOPER.

SKY CHALET UNIT B

Ground Floor



BUA 108 M²

CONFIGURATION

- 2 Bedrooms (1 Master)
- Maids room & bathroom

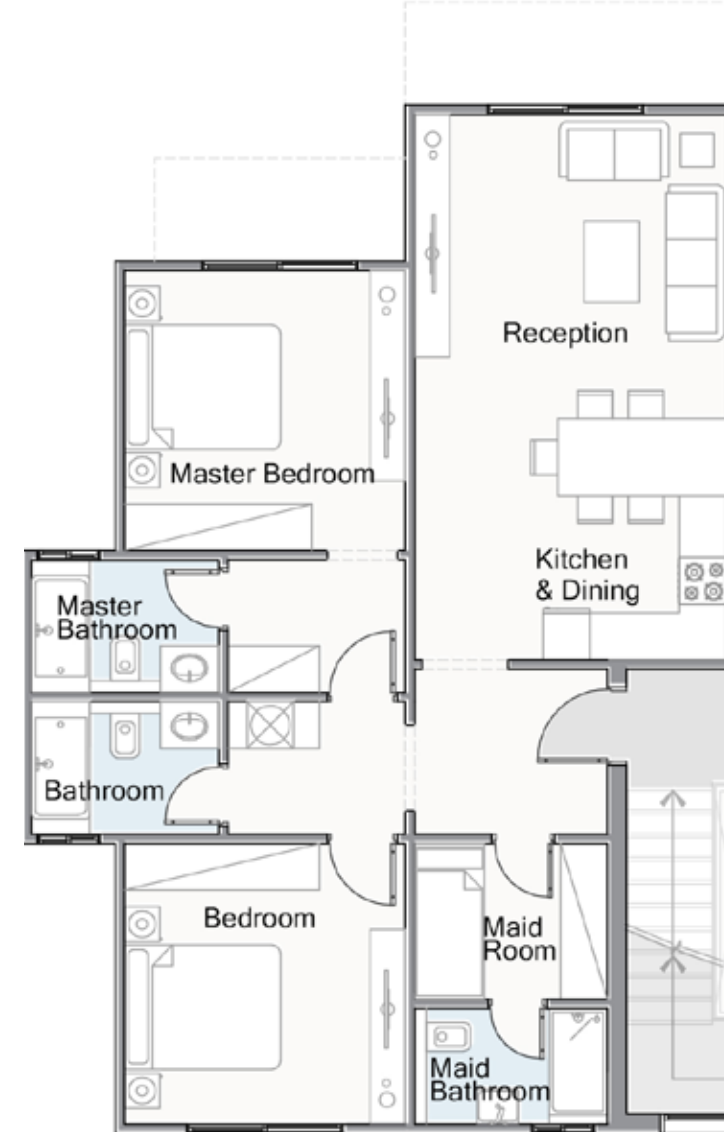
Reception	4.00 x 3.55 M ²
Kitchen & Dining	4.00 x 3.45 M ²
Maid's room	2.50 x 1.95 M ²
Maid's bathroom	2.50 x 1.50 M ²
Master bedroom	3.60 x 3.60 M ²
Master bathroom	2.40 x 1.70 M ²
Bedroom	3.60 x 3.60 M ²
Bathroom	2.40 x 1.70 M ²



· THE CEILING MATERIALS OF SOME TYPICAL TERRACES ARE WOODEN LIKE MATERIAL OR AS SHOWN IN THE RENDERS.
 · CLADDING TYPE AND COLOR WILL BE SUBJECT TO AVAILABILITY AT THE TIME OF CONSTRUCTION.
 · PLANTING SHOWN IS FOR ILLUSTRATIVE PURPOSES ONLY.
 · DRAWINGS AND DIMENSIONS ARE FOR ILLUSTRATIVE PURPOSES AND ARE SUBJECT TO MODIFICATIONS AT THE DISCRETION OF THE DEVELOPER.

SKY CHALET UNIT G

Ground Floor



BUA 108 M²

CONFIGURATION

- 2 Bedrooms (1 Master)
- Maids room & bathroom

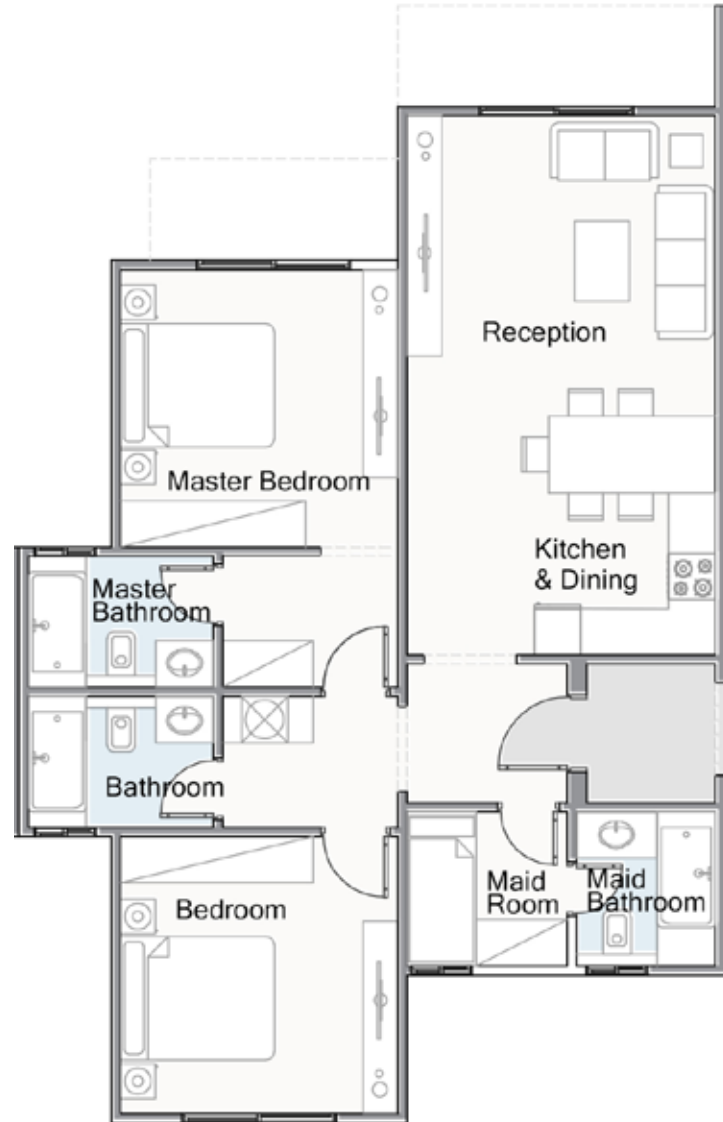
Reception	4.00 x 3.55 M ²
Kitchen & Dining	4.00 x 3.45 M ²
Maid's room	2.50 x 1.95 M ²
Maid's bathroom	2.50 x 1.50 M ²
Master bedroom	3.60 x 3.60 M ²
Master bathroom	2.40 x 1.70 M ²
Bedroom	3.60 x 3.60 M ²
Bathroom	2.40 x 1.70 M ²



· THE CEILING MATERIALS OF SOME TYPICAL TERRACES ARE WOODEN LIKE MATERIAL OR AS SHOWN IN THE RENDERS.
 · CLADDING TYPE AND COLOR WILL BE SUBJECT TO AVAILABILITY AT THE TIME OF CONSTRUCTION.
 · PLANTING SHOWN IS FOR ILLUSTRATIVE PURPOSES ONLY.
 · DRAWINGS AND DIMENSIONS ARE FOR ILLUSTRATIVE PURPOSES AND ARE SUBJECT TO MODIFICATIONS AT THE DISCRETION OF THE DEVELOPER.

SKY CHALET UNIT C

Ground Floor



BUA 105 M²

CONFIGURATION

- 2 Bedrooms (1 Master)
- Maids room & bathroom

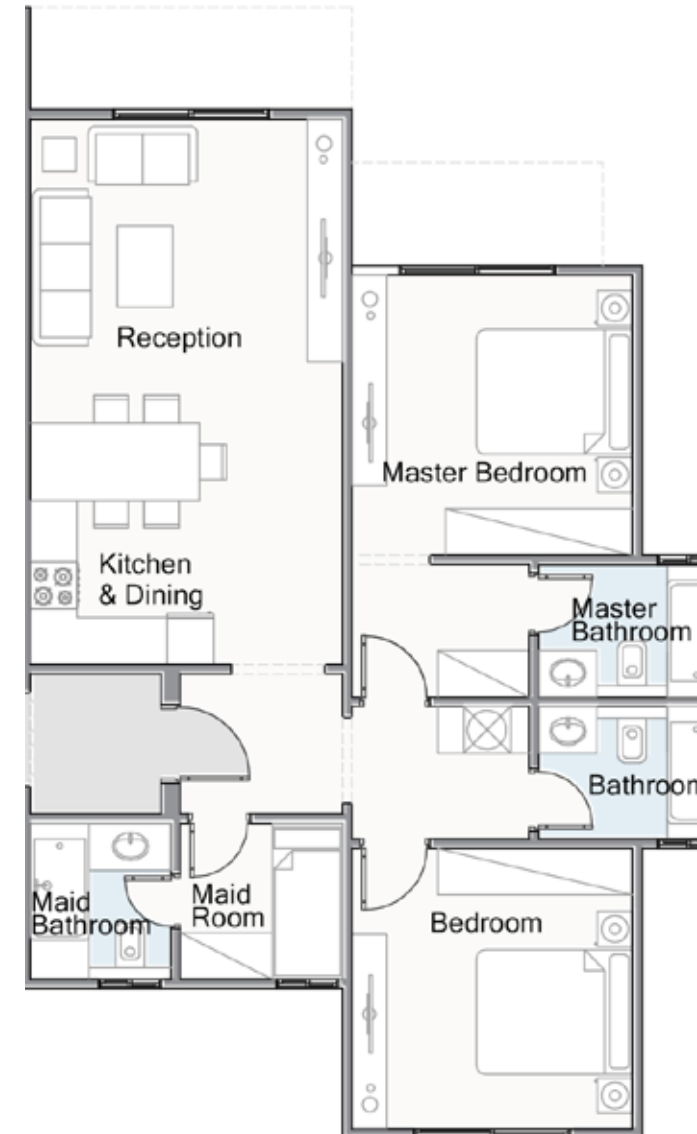
Reception	4.00 x 3.55 M ²
Kitchen & Dining	4.00 x 3.45 M ²
Maid's room	2.10 x 2.00 M ²
Maid's bathroom	2.00 x 1.80 M ²
Master bedroom	3.60 x 3.60 M ²
Master bathroom	2.40 x 1.70 M ²
Bedroom	3.60 x 3.60 M ²
Bathroom	2.40 x 1.70 M ²



· THE CEILING MATERIALS OF SOME TYPICAL TERRACES ARE WOODEN LIKE MATERIAL OR AS SHOWN IN THE RENDERS.
 · CLADDING TYPE AND COLOR WILL BE SUBJECT TO AVAILABILITY AT THE TIME OF CONSTRUCTION.
 · PLANTING SHOWN IS FOR ILLUSTRATIVE PURPOSES ONLY.
 · DRAWINGS AND DIMENSIONS ARE FOR ILLUSTRATIVE PURPOSES AND ARE SUBJECT TO MODIFICATIONS AT THE DISCRETION OF THE DEVELOPER.

SKY CHALET UNIT F

Ground Floor



BUA 105 M²

CONFIGURATION

- 2 Bedrooms (1 Master)
- Maids room & bathroom

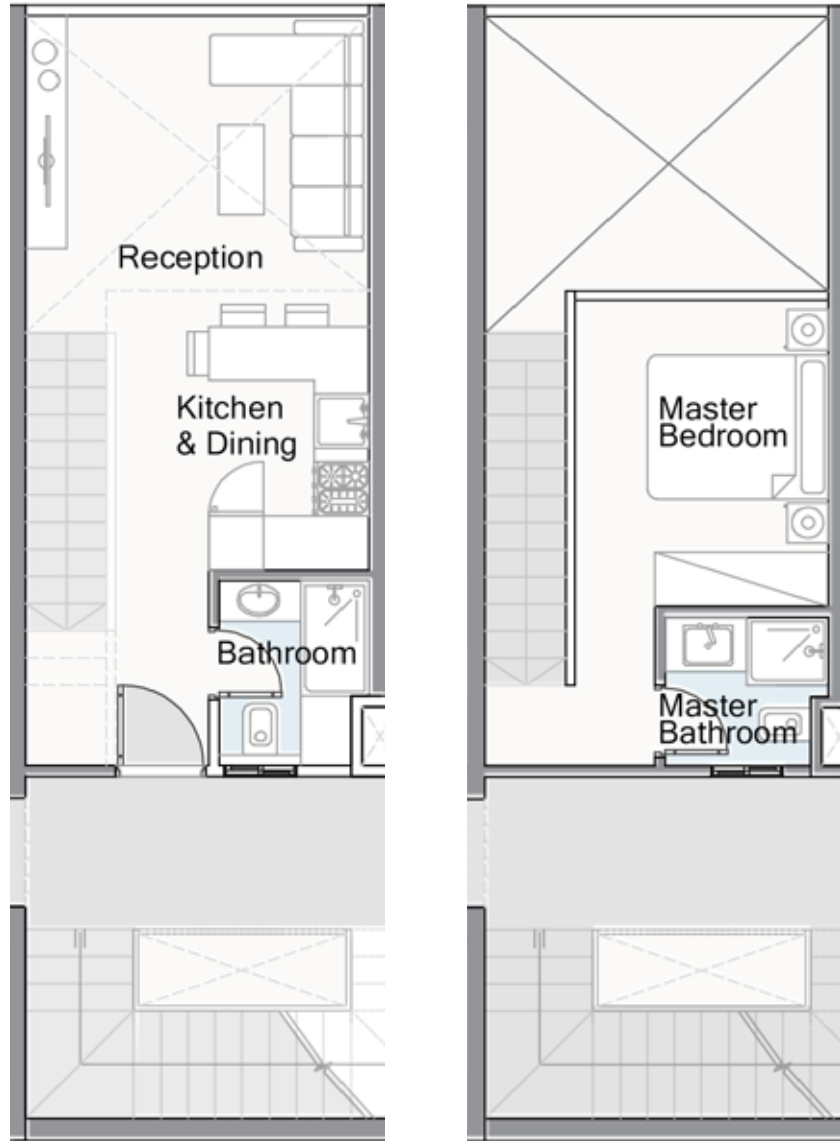
Reception	4.00 x 3.55 M ²
Kitchen & Dining	4.00 x 3.45 M ²
Maid's room	2.10 x 2.00 M ²
Maid's bathroom	2.00 x 1.80 M ²
Master bedroom	3.60 x 3.60 M ²
Master bathroom	2.40 x 1.70 M ²
Bedroom	3.60 x 3.60 M ²
Bathroom	2.40 x 1.70 M ²



· THE CEILING MATERIALS OF SOME TYPICAL TERRACES ARE WOODEN LIKE MATERIAL OR AS SHOWN IN THE RENDERS.
 · CLADDING TYPE AND COLOR WILL BE SUBJECT TO AVAILABILITY AT THE TIME OF CONSTRUCTION.
 · PLANTING SHOWN IS FOR ILLUSTRATIVE PURPOSES ONLY.
 · DRAWINGS AND DIMENSIONS ARE FOR ILLUSTRATIVE PURPOSES AND ARE SUBJECT TO MODIFICATIONS AT THE DISCRETION OF THE DEVELOPER.

SKY CHALET UNIT D

Ground & First Floor



BUA 72 M²

CONFIGURATION

· 1 Bedroom (Master)

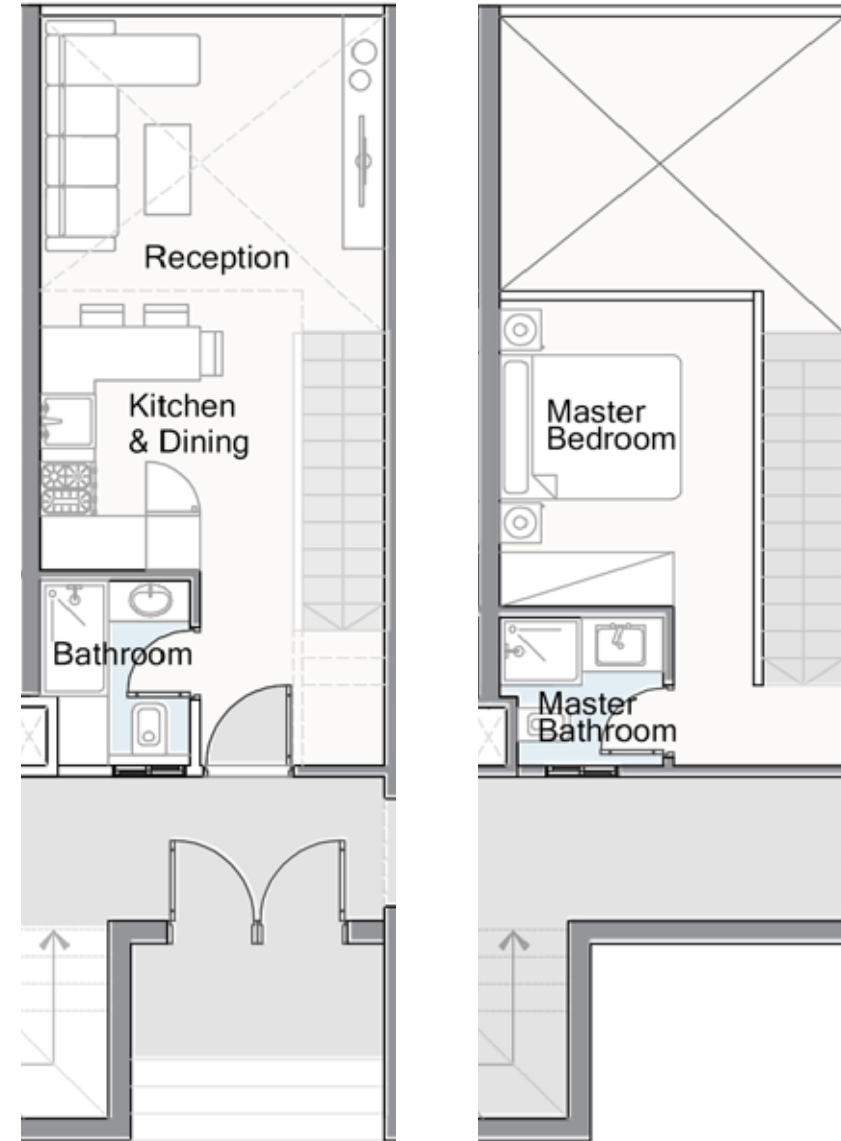
Reception	3.80 x 3.20 M ²
Kitchen & Dining	2.95 x 2.80 M ²
Bathroom	2.05 x 1.65 M ²
Master Bedroom	3.40 x 3.25 M ²
Master Bathroom	1.80 x 1.65 M ²



· THE CEILING MATERIALS OF SOME TYPICAL TERRACES ARE WOODEN LIKE MATERIAL OR AS SHOWN IN THE RENDERS.
 · CLADDING TYPE AND COLOR WILL BE SUBJECT TO AVAILABILITY AT THE TIME OF CONSTRUCTION.
 · PLANTING SHOWN IS FOR ILLUSTRATIVE PURPOSES ONLY.
 · DRAWINGS AND DIMENSIONS ARE FOR ILLUSTRATIVE PURPOSES AND ARE SUBJECT TO MODIFICATIONS AT THE DISCRETION OF THE DEVELOPER.

SKY CHALET UNIT E

Ground & First Floor



BUA 72 M²

CONFIGURATION

· 1 Bedroom (Master)

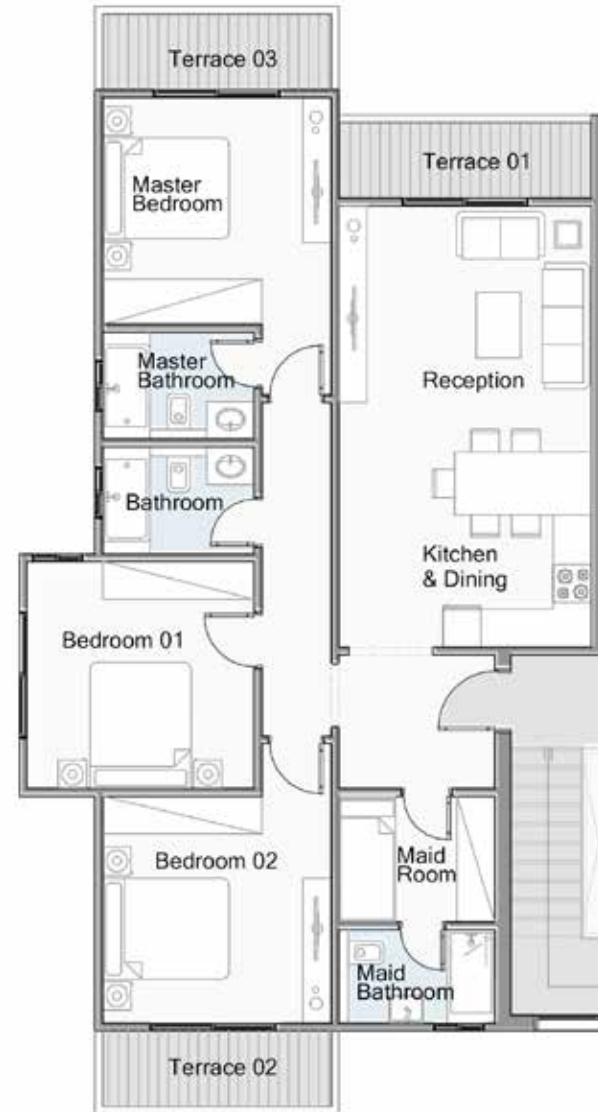
Reception	3.80 x 3.20 M ²
Kitchen & Dining	2.95 x 2.80 M ²
Bathroom	2.05 x 1.65 M ²
Master Bedroom	3.40 x 3.25 M ²
Master Bathroom	1.80 x 1.65 M ²



· THE CEILING MATERIALS OF SOME TYPICAL TERRACES ARE WOODEN LIKE MATERIAL OR AS SHOWN IN THE RENDERS.
 · CLADDING TYPE AND COLOR WILL BE SUBJECT TO AVAILABILITY AT THE TIME OF CONSTRUCTION.
 · PLANTING SHOWN IS FOR ILLUSTRATIVE PURPOSES ONLY.
 · DRAWINGS AND DIMENSIONS ARE FOR ILLUSTRATIVE PURPOSES AND ARE SUBJECT TO MODIFICATIONS AT THE DISCRETION OF THE DEVELOPER.

SKY CHALET UNIT I-O

Typical Floor (First/Second)



BUA 134 M²

CONFIGURATION

- 3 Bedrooms (1 Master)
- Maids room & bathroom

Reception	4.00 x 3.55 M ²
Kitchen & Dining	4.00 x 3.45 M ²
Maid's room	2.50 x 2.00 M ²
Maid's bathroom	2.50 x 1.50 M ²
Master bedroom	3.65 x 3.60 M ²
Master bathroom	2.40 x 1.70 M ²
Bedroom 01	3.60 x 3.60 M ²
Bedroom 02	3.65 x 3.60 M ²
Bathroom	2.40 x 1.70 M ²
Terrace 01	4.00 x 1.20 M ²
Terrace 02	3.65 x 1.20 M ²
Terrace 03	3.65 x 1.20 M ²



· THE CEILING MATERIALS OF SOME TYPICAL TERRACES ARE WOODEN LIKE MATERIAL OR AS SHOWN IN THE RENDERS.
 · CLADDING TYPE AND COLOR WILL BE SUBJECT TO AVAILABILITY AT THE TIME OF CONSTRUCTION.
 · PLANTING SHOWN IS FOR ILLUSTRATIVE PURPOSES ONLY.
 · DRAWINGS AND DIMENSIONS ARE FOR ILLUSTRATIVE PURPOSES AND ARE SUBJECT TO MODIFICATIONS AT THE DISCRETION OF THE DEVELOPER.

SKY CHALET UNIT N-U

Typical Floor (First/Second)



BUA 134 M²

CONFIGURATION

- 3 Bedrooms (1 Master)
- Maids room & bathroom

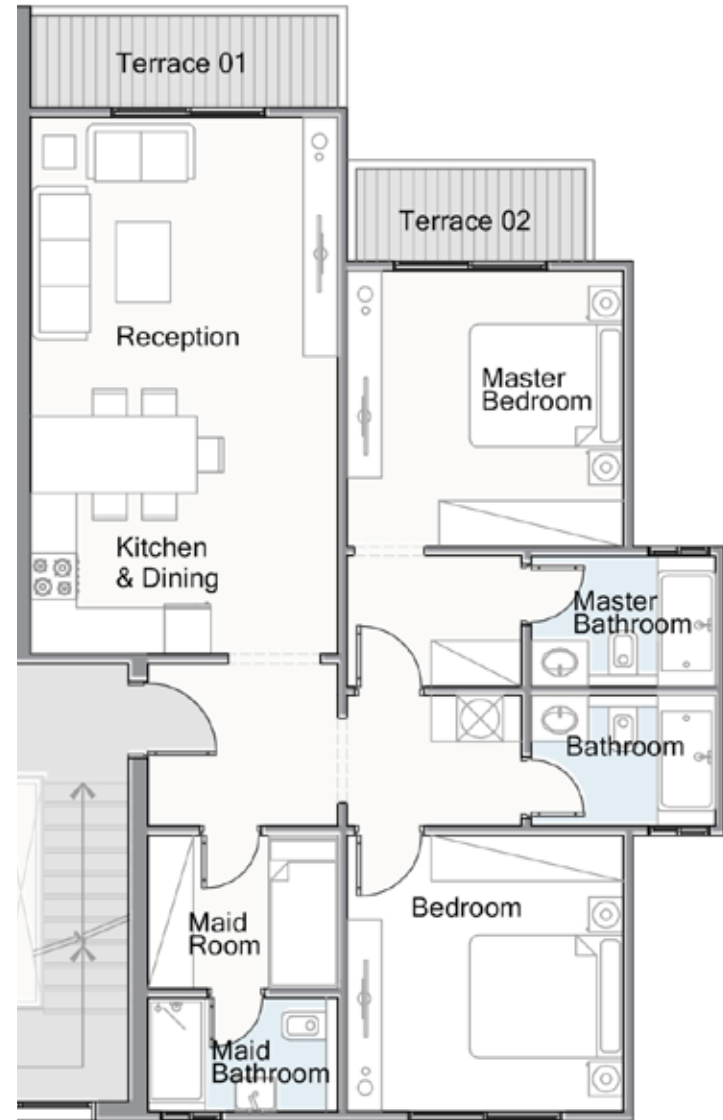
Reception	4.00 x 3.55 M ²
Kitchen & Dining	4.00 x 3.45 M ²
Maid's room	2.50 x 2.00 M ²
Maid's bathroom	2.50 x 1.50 M ²
Master bedroom	3.65 x 3.60 M ²
Master bathroom	2.40 x 1.70 M ²
Bedroom 01	3.60 x 3.60 M ²
Bedroom 02	3.65 x 3.60 M ²
Bathroom	2.40 x 1.70 M ²
Terrace 01	4.00 x 1.20 M ²
Terrace 02	3.65 x 1.20 M ²
Terrace 03	3.65 x 1.20 M ²



· THE CEILING MATERIALS OF SOME TYPICAL TERRACES ARE WOODEN LIKE MATERIAL OR AS SHOWN IN THE RENDERS.
 · CLADDING TYPE AND COLOR WILL BE SUBJECT TO AVAILABILITY AT THE TIME OF CONSTRUCTION.
 · PLANTING SHOWN IS FOR ILLUSTRATIVE PURPOSES ONLY.
 · DRAWINGS AND DIMENSIONS ARE FOR ILLUSTRATIVE PURPOSES AND ARE SUBJECT TO MODIFICATIONS AT THE DISCRETION OF THE DEVELOPER.

SKY CHALET UNIT J-P

Typical Floor (First/Second)



BUA 119 M²

CONFIGURATION

- 2 Bedrooms (1 Master)
- Maids room & bathroom

Reception	4.00x 3.55 M ²
Kitchen & Dining	4.00 x 3.45 M ²
Maid's room	2.50 x 1.95 M ²
Maid's bathroom	2.50 x 1.50 M ²
Master bedroom	3.60 x 3.60 M ²
Master bathroom	2.40 x 1.70 M ²
Bedroom	3.60 x 3.60 M ²
Bathroom	2.40 x 1.70 M ²
Terrace 01	4.00 x 1.20 M ²
Terrace 02	3.00 x 1.20 M ²

· THE CEILING MATERIALS OF SOME TYPICAL TERRACES ARE WOODEN LIKE MATERIAL OR AS SHOWN IN THE RENDERS.
 · CLADDING TYPE AND COLOR WILL BE SUBJECT TO AVAILABILITY AT THE TIME OF CONSTRUCTION.
 · PLANTING SHOWN IS FOR ILLUSTRATIVE PURPOSES ONLY.
 · DRAWINGS AND DIMENSIONS ARE FOR ILLUSTRATIVE PURPOSES AND ARE SUBJECT TO MODIFICATIONS AT THE DISCRETION OF THE DEVELOPER.



SKY CHALET UNIT M-T

Typical Floor (First/Second)



BUA 119 M²

CONFIGURATION

- 2 Bedrooms (1 Master)
- Maids room & bathroom

Reception	4.00x 3.55 M ²
Kitchen & Dining	4.00 x 3.45 M ²
Maid's room	2.50 x 1.95 M ²
Maid's bathroom	2.50 x 1.50 M ²
Master bedroom	3.60 x 3.60 M ²
Master bathroom	2.40 x 1.70 M ²
Bedroom	3.60 x 3.60 M ²
Bathroom	2.40 x 1.70 M ²
Terrace 01	4.00 x 1.20 M ²
Terrace 02	3.00 x 1.20 M ²

· THE CEILING MATERIALS OF SOME TYPICAL TERRACES ARE WOODEN LIKE MATERIAL OR AS SHOWN IN THE RENDERS.
 · CLADDING TYPE AND COLOR WILL BE SUBJECT TO AVAILABILITY AT THE TIME OF CONSTRUCTION.
 · PLANTING SHOWN IS FOR ILLUSTRATIVE PURPOSES ONLY.
 · DRAWINGS AND DIMENSIONS ARE FOR ILLUSTRATIVE PURPOSES AND ARE SUBJECT TO MODIFICATIONS AT THE DISCRETION OF THE DEVELOPER.



SKY CHALET UNIT K-Q

Typical Floor (First/Second)



BUA 116 M²

CONFIGURATION

- 2 Bedrooms (1 Master)
- Maid's room & bathroom

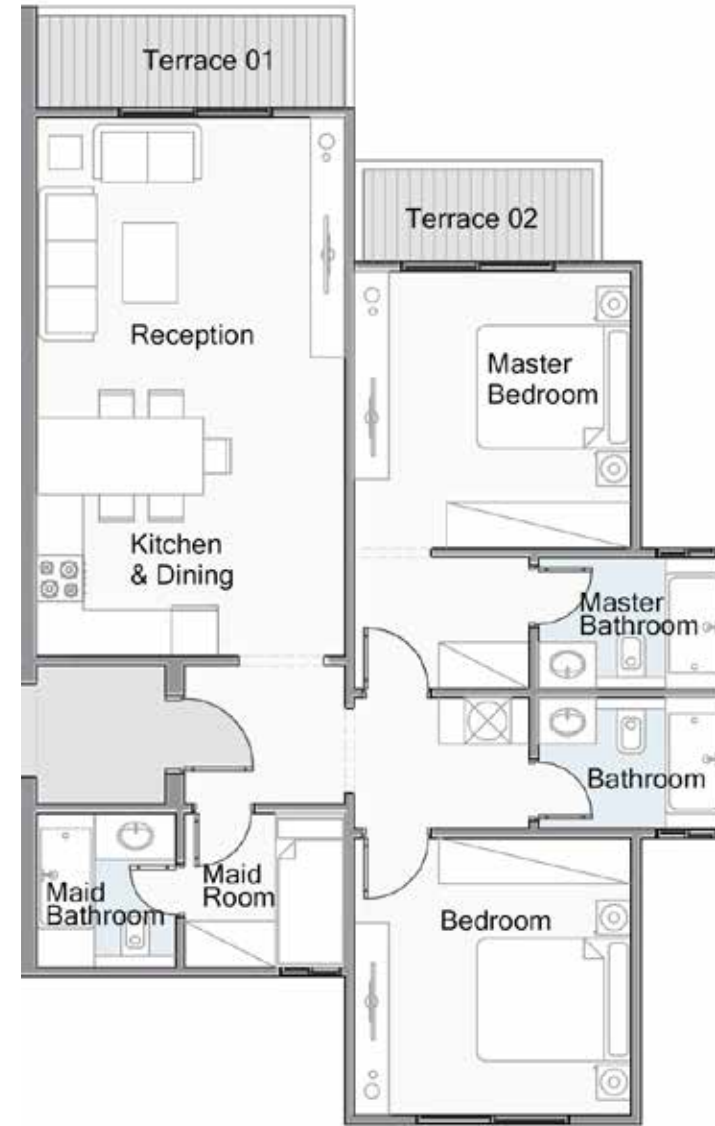
Reception	4.00 x 3.55 M ²
Kitchen & Dining	4.00 x 3.45 M ²
Maid's room	2.10 x 2.00 M ²
Maid's bathroom	2.00 x 1.80 M ²
Master bedroom	3.60 x 3.60 M ²
Master bathroom	2.40 x 1.70 M ²
Bedroom	3.60 x 3.60 M ²
Bathroom	2.40 x 1.70 M ²
Terrace 01	4.00 x 1.20 M ²
Terrace 02	3.00 x 1.20 M ²



· THE CEILING MATERIALS OF SOME TYPICAL TERRACES ARE WOODEN LIKE MATERIAL OR AS SHOWN IN THE RENDERS.
 · CLADDING TYPE AND COLOR WILL BE SUBJECT TO AVAILABILITY AT THE TIME OF CONSTRUCTION.
 · PLANTING SHOWN IS FOR ILLUSTRATIVE PURPOSES ONLY.
 · DRAWINGS AND DIMENSIONS ARE FOR ILLUSTRATIVE PURPOSES AND ARE SUBJECT TO MODIFICATIONS AT THE DISCRETION OF THE DEVELOPER.

SKY CHALET UNIT L-S

Typical Floor (First/Second)



BUA 116 M²

CONFIGURATION

- 2 Bedrooms (1 Master)
- Maid's room & bathroom

Reception	4.00 x 3.55 M ²
Kitchen & Dining	4.00 x 3.45 M ²
Maid's room	2.10 x 2.00 M ²
Maid's bathroom	2.00 x 1.80 M ²
Master bedroom	3.60 x 3.60 M ²
Master bathroom	2.40 x 1.70 M ²
Bedroom	3.60 x 3.60 M ²
Bathroom	2.40 x 1.70 M ²
Terrace 01	4.00 x 1.20 M ²
Terrace 02	3.00 x 1.20 M ²



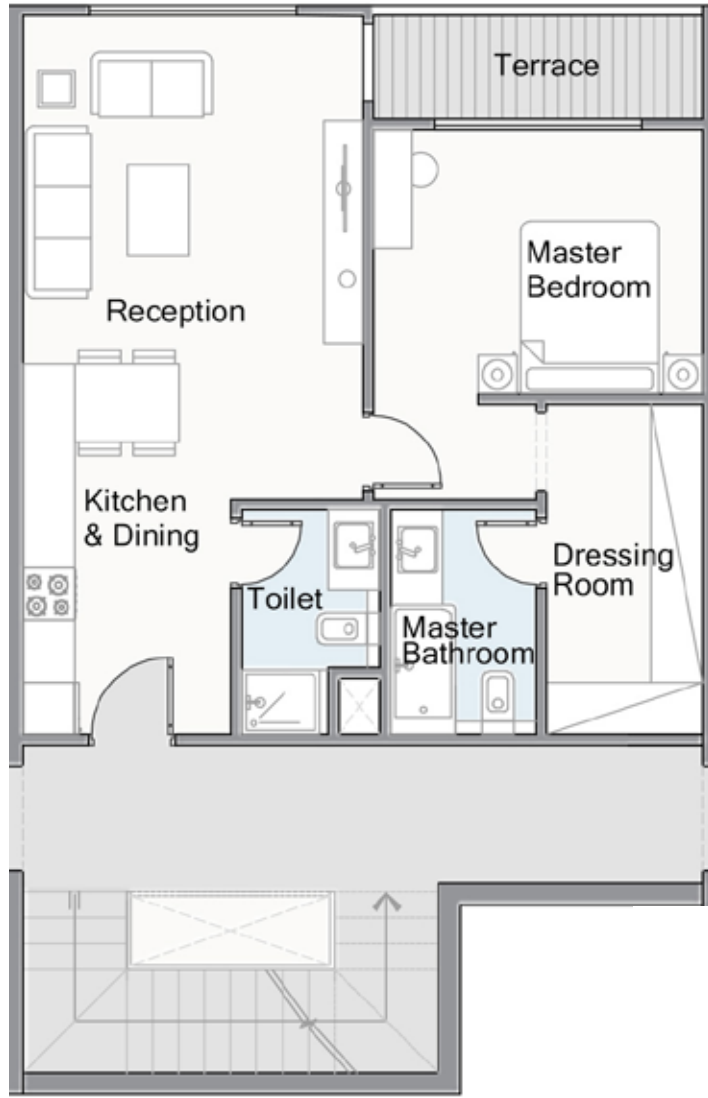
· THE CEILING MATERIALS OF SOME TYPICAL TERRACES ARE WOODEN LIKE MATERIAL OR AS SHOWN IN THE RENDERS.
 · CLADDING TYPE AND COLOR WILL BE SUBJECT TO AVAILABILITY AT THE TIME OF CONSTRUCTION.
 · PLANTING SHOWN IS FOR ILLUSTRATIVE PURPOSES ONLY.
 · DRAWINGS AND DIMENSIONS ARE FOR ILLUSTRATIVE PURPOSES AND ARE SUBJECT TO MODIFICATIONS AT THE DISCRETION OF THE DEVELOPER.

SKY CHALET UNIT R

Second Floor

BUA 80 M²

CONFIGURATION
· 1 Bedrooms (Master)



Reception	3.95 x 3.90 M ²
Kitchen & Dining	4.45 x 2.40 M ²
Master bedroom	3.80 x 3.10 M ²
Master bathroom	2.60 x 1.70 M ²
Mater Dressing Room	3.85 x 1.80 M ²
Bathroom	2.60 x 1.60 M ²
Terrace	3.80 x 1.20 M ²

· THE CEILING MATERIALS OF SOME TYPICAL TERRACES ARE WOODEN LIKE MATERIAL OR AS SHOWN IN THE RENDERS.
· CLADDING TYPE AND COLOR WILL BE SUBJECT TO AVAILABILITY AT THE TIME OF CONSTRUCTION.
· PLANTING SHOWN IS FOR ILLUSTRATIVE PURPOSES ONLY.
· DRAWINGS AND DIMENSIONS ARE FOR ILLUSTRATIVE PURPOSES AND ARE SUBJECT TO MODIFICATIONS AT THE DISCRETION OF THE DEVELOPER.



DESIGN CONSULTANTS

Lab 59, our visionary architecture consultant, has crafted Telal Shores' modern and functional design, turning it into an architectural masterpiece.

Walk-In, our master planning consultant, has meticulously designed the harmonious layout of Telal Shores, blending coastal urban fabrics with nature.

Vanilla, our visual consultant, has added the final touches to showcase Telal Shores' beauty, enhancing its appeal and presentation.



CONTACT US

 16466

 [RoyaDevelopments](#)  [royadevelopments](#)  info@rooyagroup.com

 <http://www.royadevelopments.com>

ADDRESS

3/1150 Emtedad Abdel Hameed Badawy St.,
Sheraton Buildings Heliopolis, Cairo, Egypt, 11799

Telal Shores Awaits...

